

Installation Guide nanoCAD 24



nanoCAD
ENGINEERING ECOSYSTEM

TABLE OF CONTENTS

INTRODUCTION.....	3
INSTALLATION	4
INSTALLATION OF ADDITIONAL MODULES	9
REGISTRATION.....	10
Enter the serial number to get a license file.....	10
Request license file online	12
Request license file by e-mail	15
Save license request to file	17
Manually activate license file.....	17
License file location.....	18
NETWORK LICENSE ACTIVATION	20
Connect to License Server.....	20
Specify License Server.....	20
License Borrowing.....	22
How to Borrow License	22
About.....	23
NETWORK LICENSING	24
Run License Server	25
Request Network License	25
User Authentication.....	26
Confirm Registration Data	27
Send Registration Data to Licensing Server	27
Request license file by email.....	28
Save license request to file	28
Respond from Licensing Service	29
Configure License Server.....	31
Remote connection to License Server	35
POSSIBLE PROBLEMS AND HOW TO FIX THEM	36
Get error when start setup.exe file	36
Installation Wizard does not accept serial number	36
Software does not run	36

Introduction

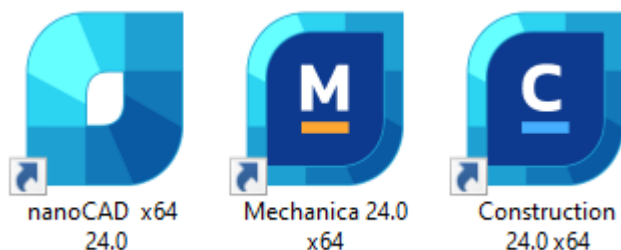
This instruction explains the process of installation of nanoCAD products.

nanoCAD consists of simple nanoCAD and Modules. Simple nanoCAD is a complete product, it includes base functionality. Modules include additional functionality that expands the program capabilities. There are the following modules:

- Construction,
- Mechanica,
- Topoplan,
- 3D,
- Raster.

Each module is licensed independently of the others.

After installation of nanoCAD with all modules, there appear three desktop shortcuts. They allow to run the program in one of three configurations: Platform, Mechanica and Construction:



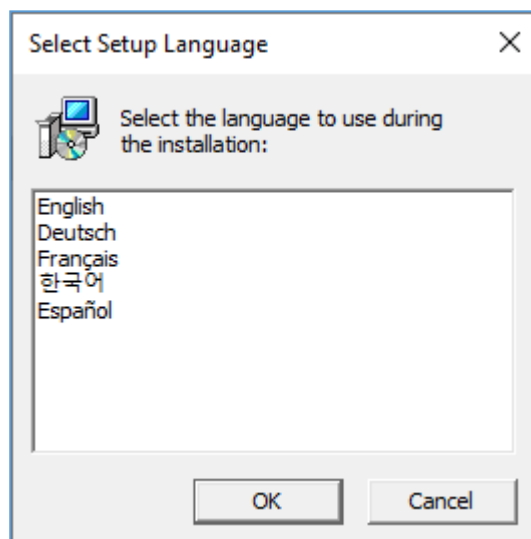
Installation

When the downloading process has finished, the Setup Wizard dialog box appears. You can also start installation by double clicking on the installation file with .exe file format:

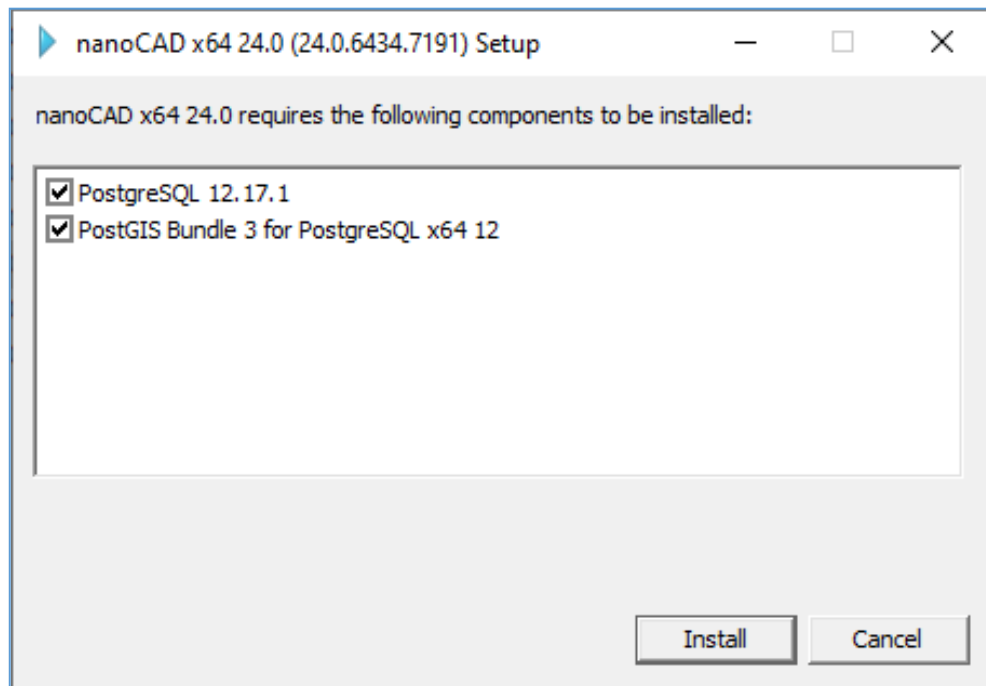
Select one of the available languages to be used during the installation of the software:

- English
- German
- French
- Korean
- Spanish

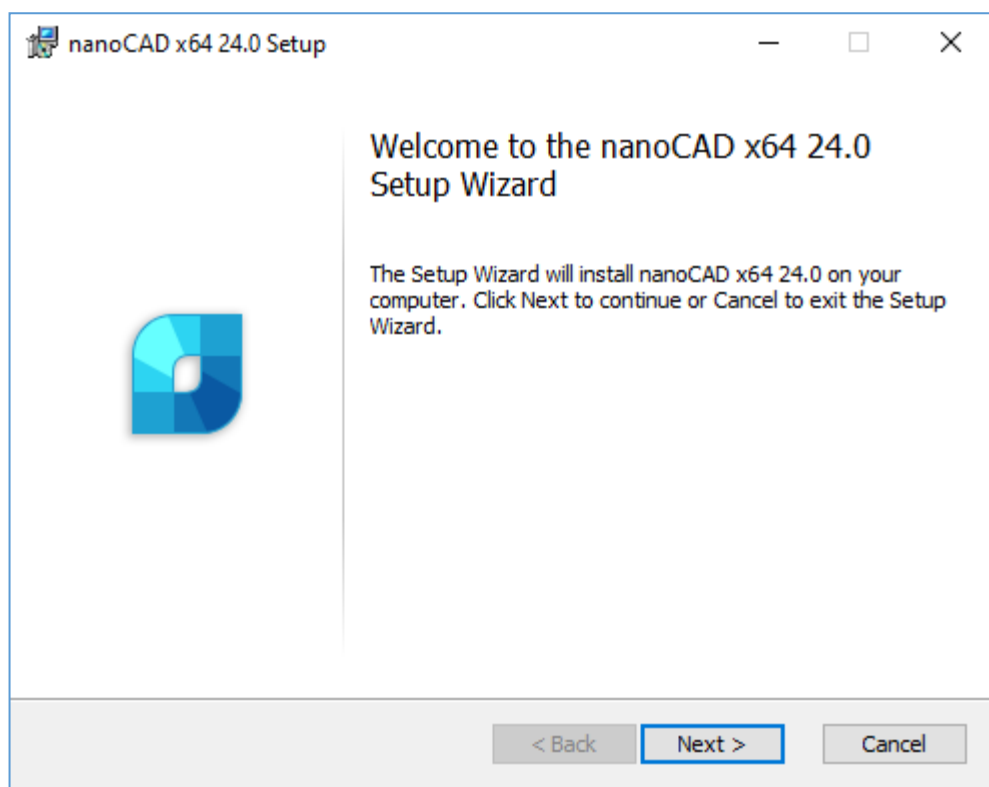
nanoCAD interface will also be displayed in the selected language.
Click OK to start the installation.



Select the Prerequisites to install nanoCAD 24. By default all are selected

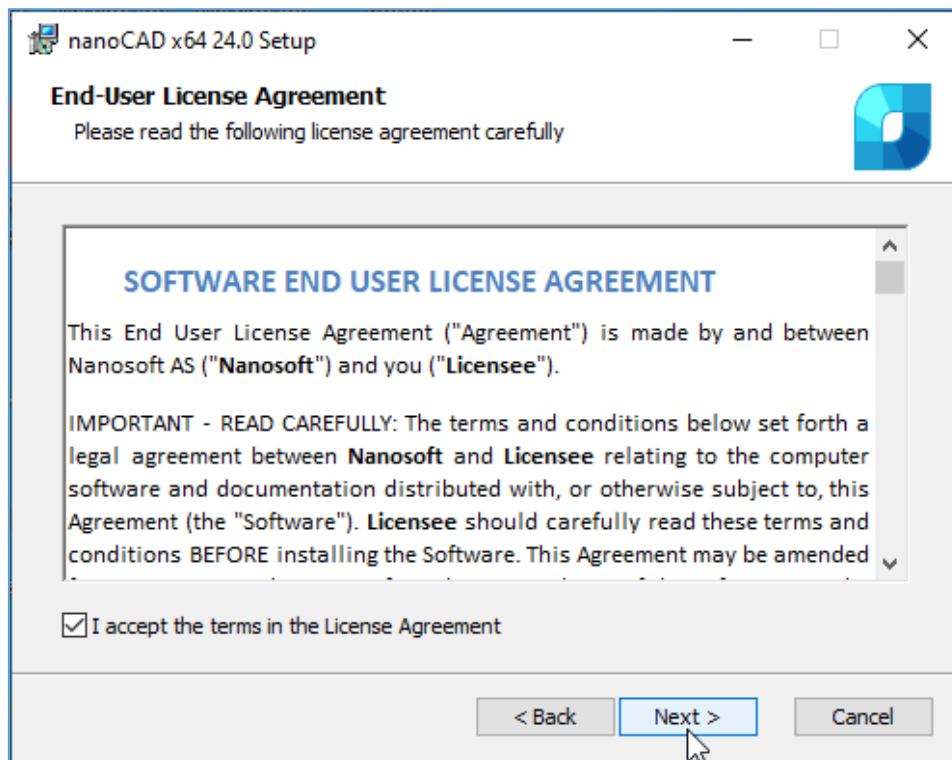


Click Install to continue.



Click *Next* to continue.

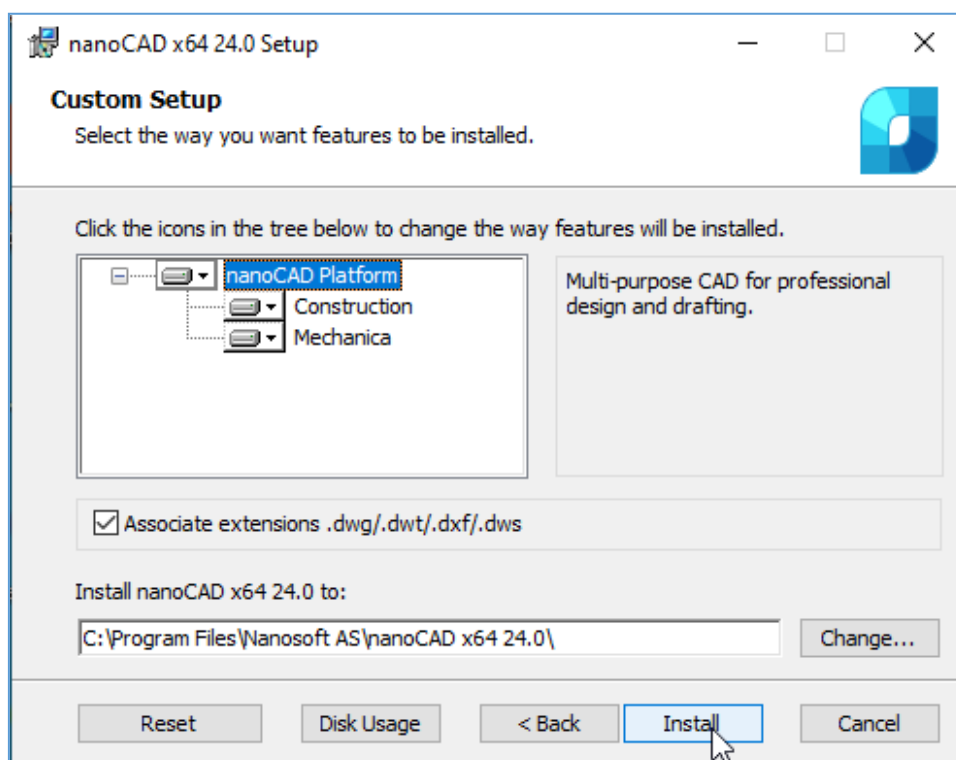
In the next window you should read the End-User License Agreement. To continue, check *I accept the terms in the License Agreement* box and click *Next* button:

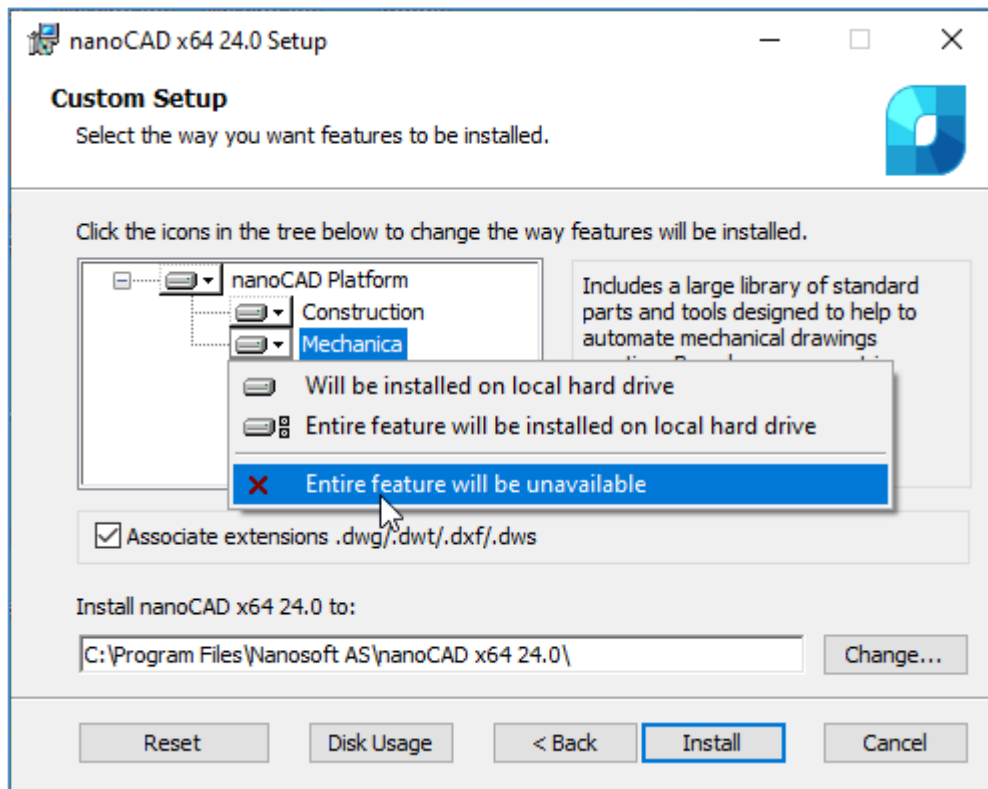


At the following step of the installation process you should choose **Mechanica** and **Construction** modules if you need to install them. **We recommend to install these modules only if you have licenses for them.** Other modules – 3D, Raster, Topoplan – will be installed by default.

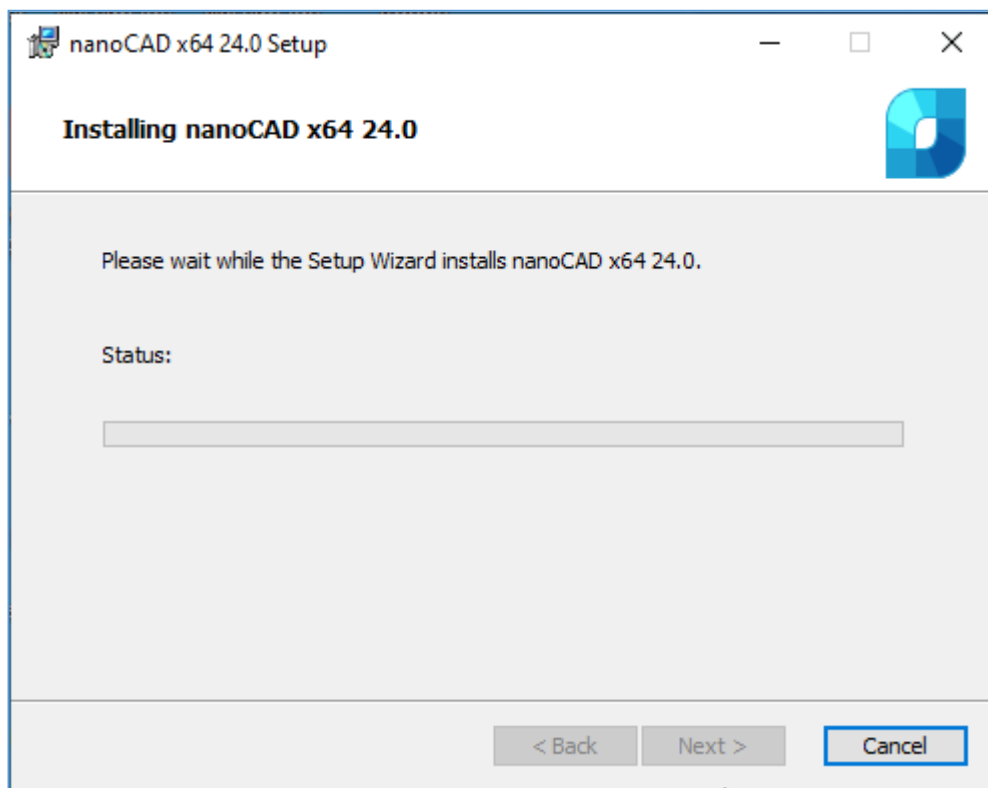
Choose the folder where the program will be installed. We recommend not to change the default folder.

Associate .dwg (drawing), .dwt (drawing template), .dxf (drawing exchange format) and .dws (standards) files with nanoCAD.

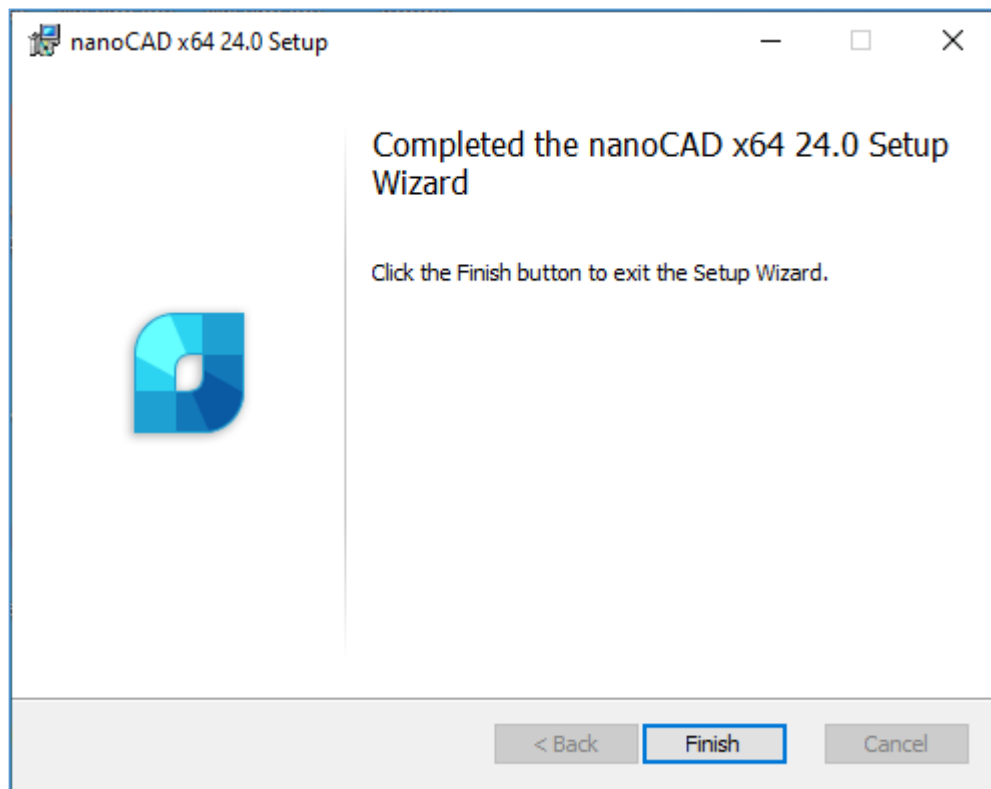




Click the *Install* button to start the installation process:



After the installation process completed, click *Finish* to run Registration Wizard and register nanoCAD.



Registration Wizard also might be started manually: *Start menu – All programs – nanoCAD x64 24.0 – Registration Wizard*.

Installation of Additional Modules

nanoCAD is a multicomponent software, it includes base Platform and additional components:

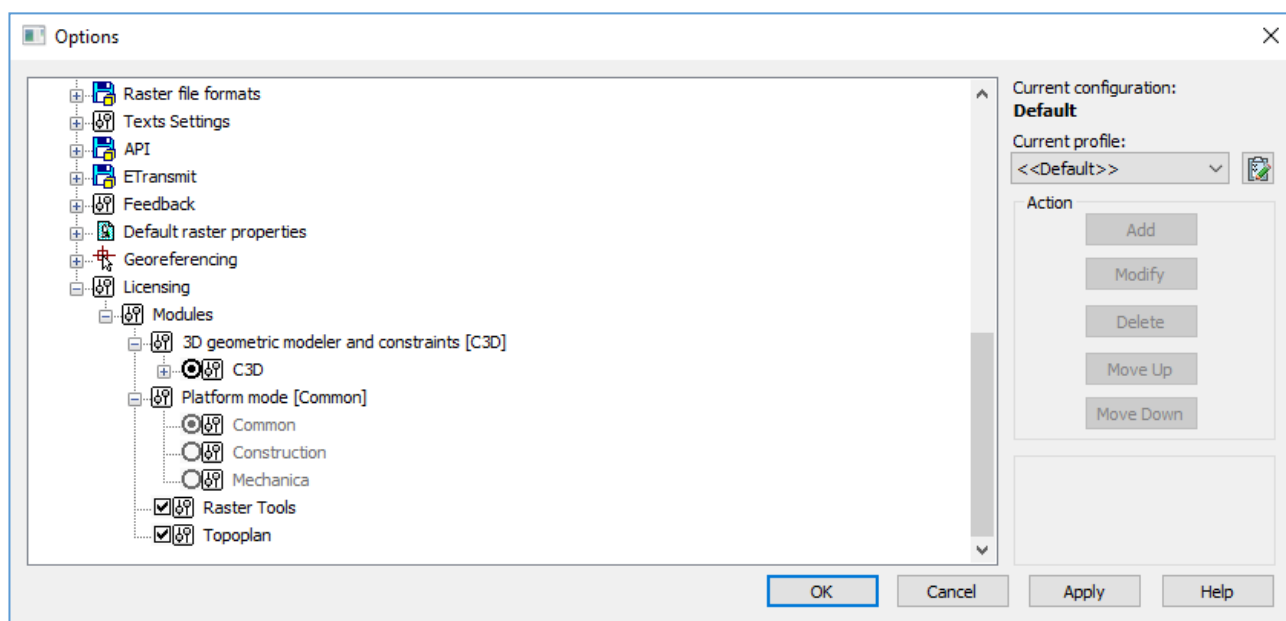
- Construction;
- Mechanica;
- Topoplan;
- 3D;
- Raster.

You can refuse installation of Construction and Mechanica at the installation process, other modules will be installed automatically.

Add module

If you bought additional module, make sure that it is switched on in the program options.

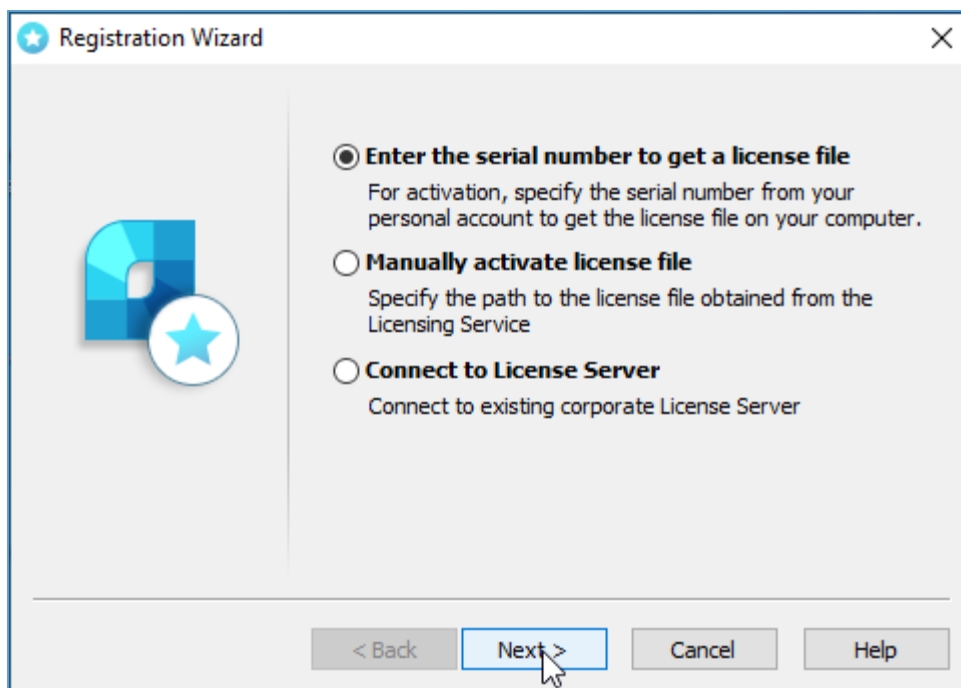
- Open *Options* dialog;
- Find *Licensing – Modules* section;
- Select required components and click *OK*;
- Restart nanoCAD.



Registration

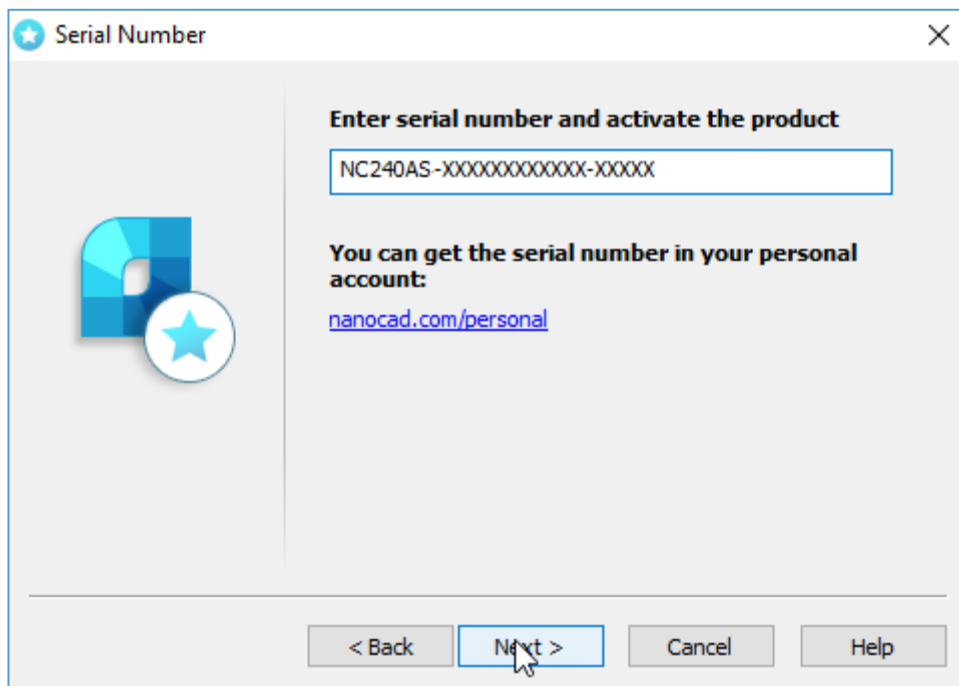
After the installation of nanoCAD will be started Registration Wizard.

- If you need to activate the license or get serial number, choose *Register or activate license file* option.
- If you have received license file and need to activate it, choose *Manually activate license file* option.
- If you use network license and License Server is installed and runs, choose *Connect to License Server* option. Otherwise, close Registration Wizard: you should install License Server_at first.

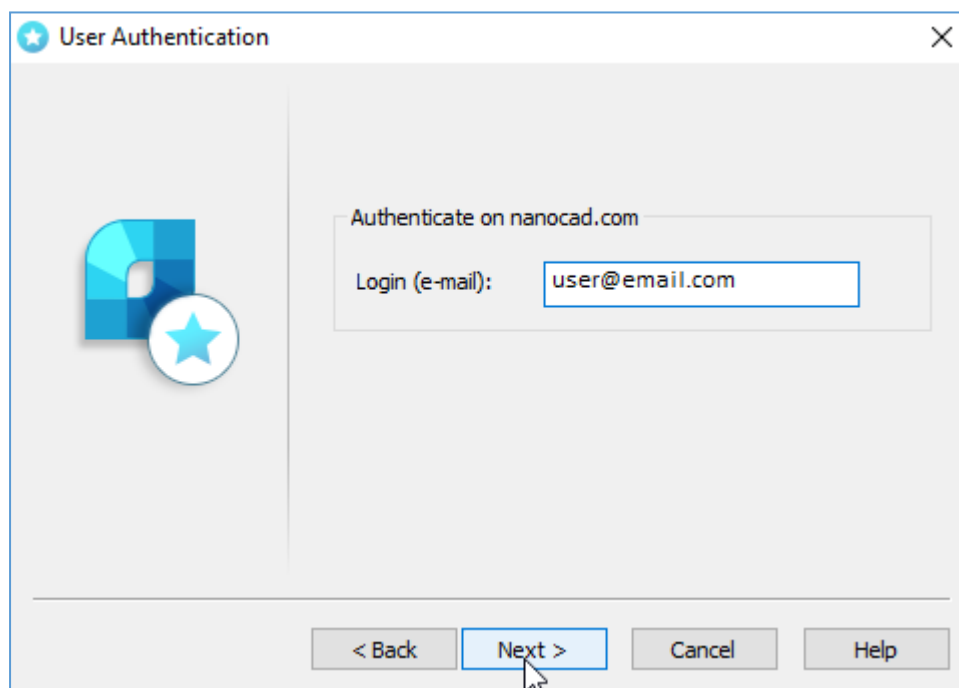


Enter the serial number to get a license file

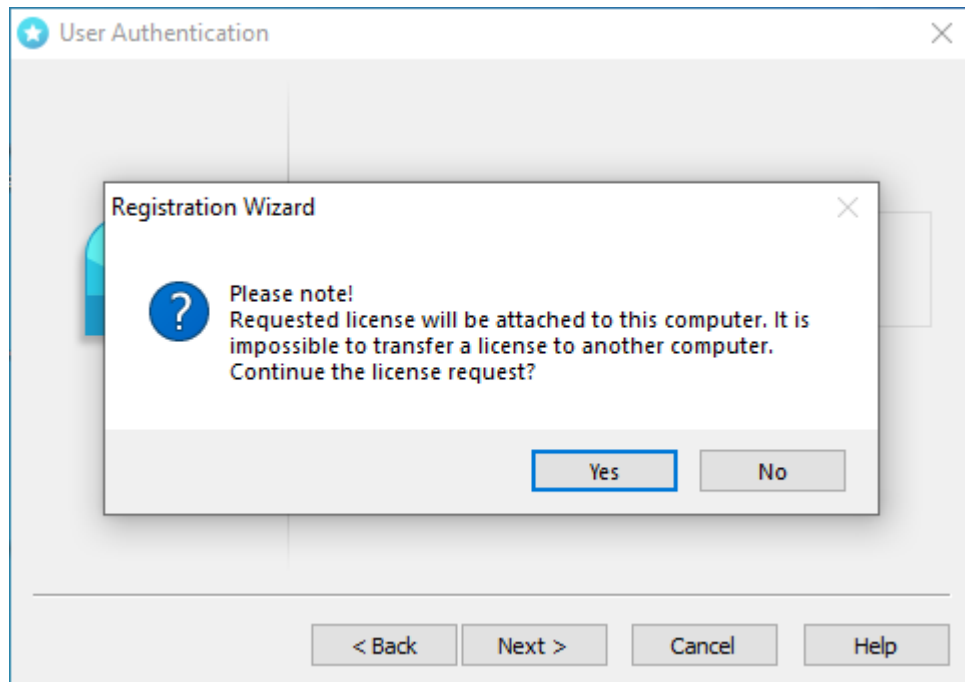
If you have serial number, enter it in the field and click *Next*. The *User Authentication* window will be opened. Otherwise choose *Get serial number* option. You will be redirected to www.nanocad.com website. Follow site instruction for getting serial number, then start Registration Wizard again to activate your license.



In User Authentication window enter your login (it coincides with email you registered at nanocad.com).

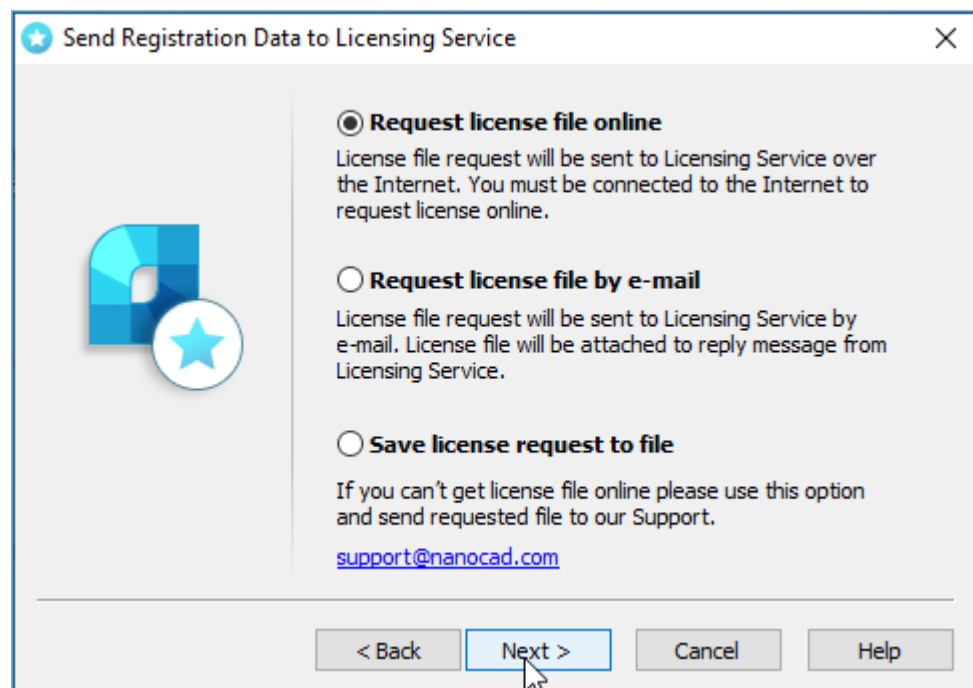


Click *Next* and then *Yes* to continue the license request:



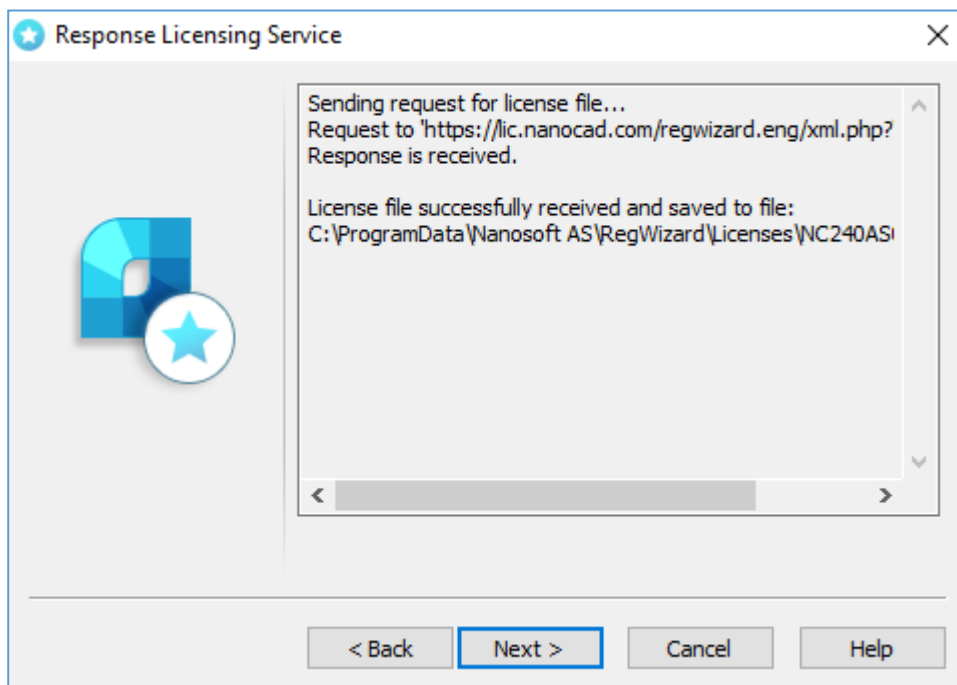
Then *Send Registration Data to Licensing Server* window will be opened.

Request license file online



This option can be chosen on computers that have Internet connection. Registration Wizard connects with License Server through the Internet, gets the license, then saves it on computer and activates automatically.

Then *Send Registration Data to Licensing Server* window will be opened.

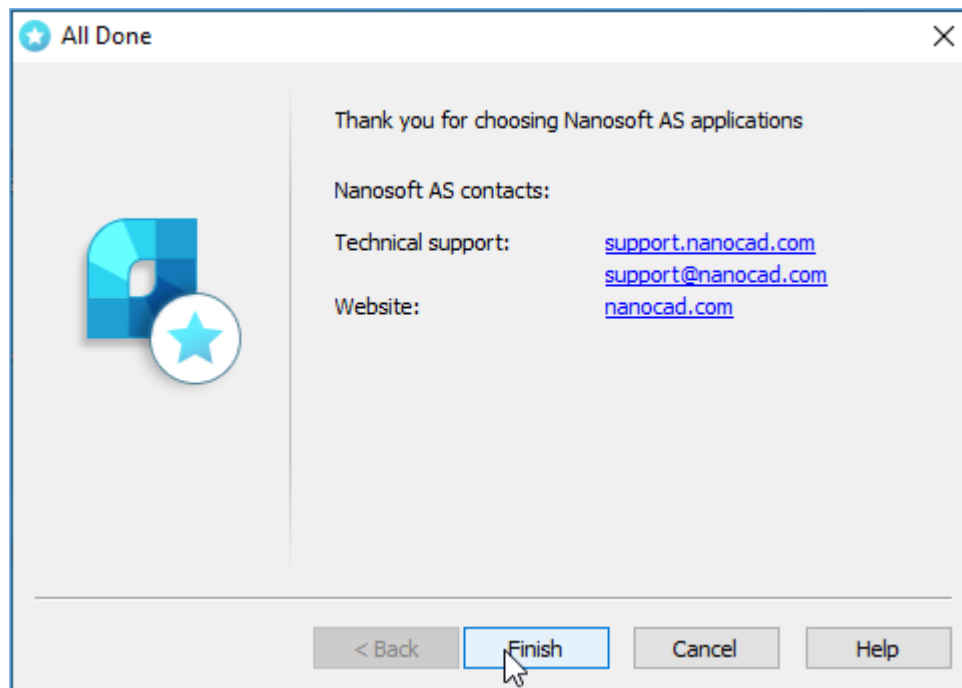


Note. License files are located in the following folder by default: *C:\ProgramData\Nanosoft AS\RegWizard\Licenses*.

The result of an online license request may be:

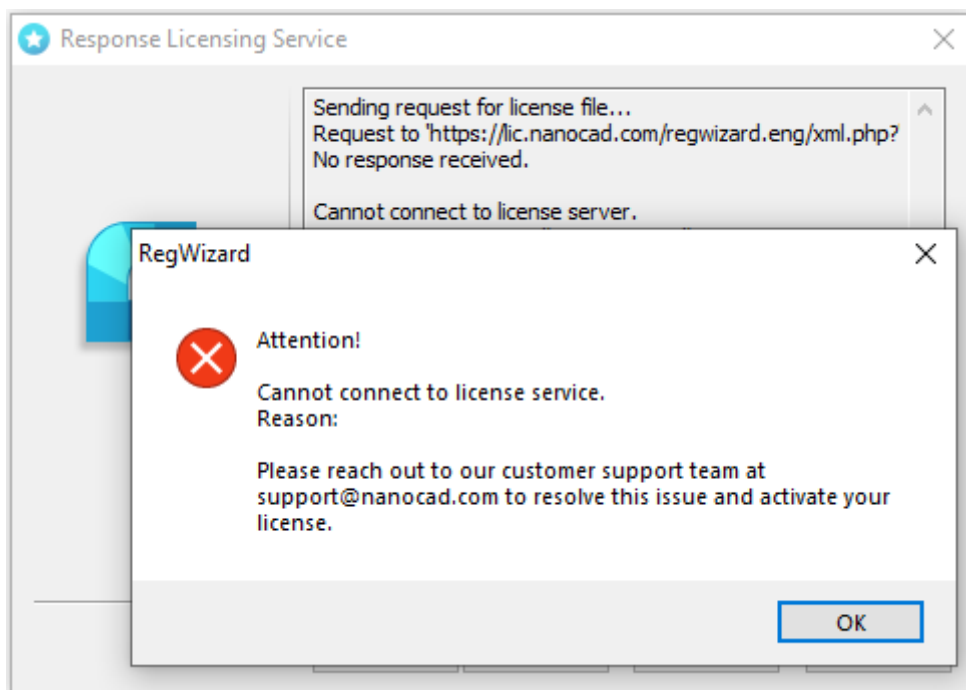
- license file successfully received;
- license file request failed;
- failed connection to Licensing Server.

If the product was successfully activated, click *Next*, then *Finish*.

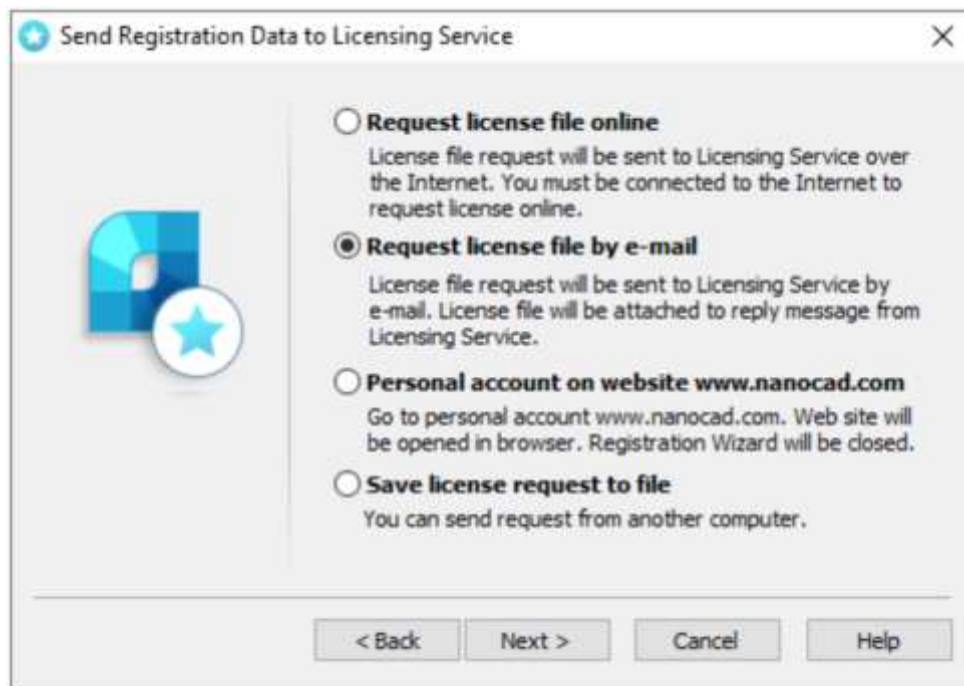


Congratulations! License file successfully received. Product is activated.

In the case if you don't have Internet connection or you get *failed connection* error, request license file in another way.



Request license file by e-mail



It is possible to get license file by e-mail. Choose this option in *Send Registration Data to Licensing Server* window of the Registration Wizard. Email will be generated automatically; you should send it. Please do not edit the message just send it as it is.

To:

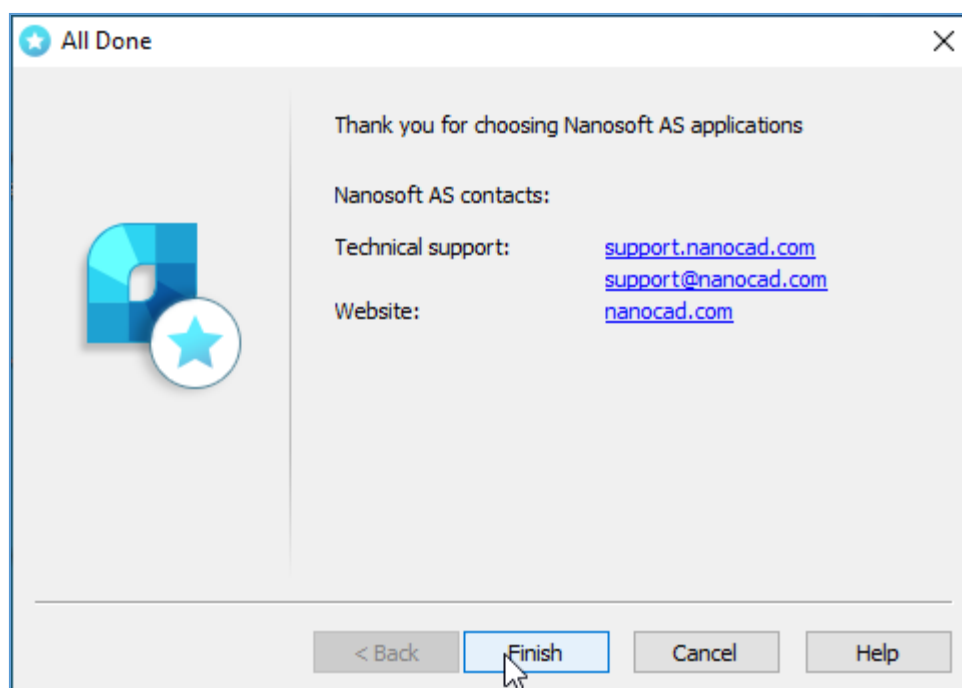
Subject:

Body Text: Variable Width

Please do not change the subject of the email, it will speed up the processing of the request.

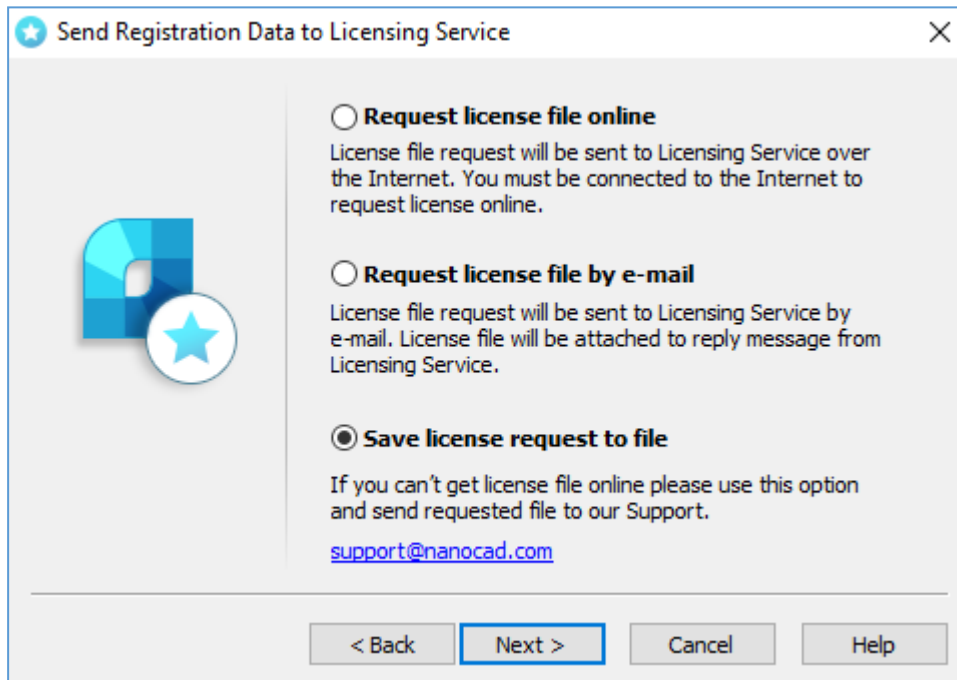
CDKey=NC240AS-XXXXXXXXXXXX-XXXXX
 E-mail=user@email.com
 Build=24.0
 RWB=84
 Customer=CustomerName
 Company=home_office

You will get an email with license file. Save this file on your PC, then start Registration Wizard and choose *Manually activate license* option.



Click *Finish*.

Save license request to file

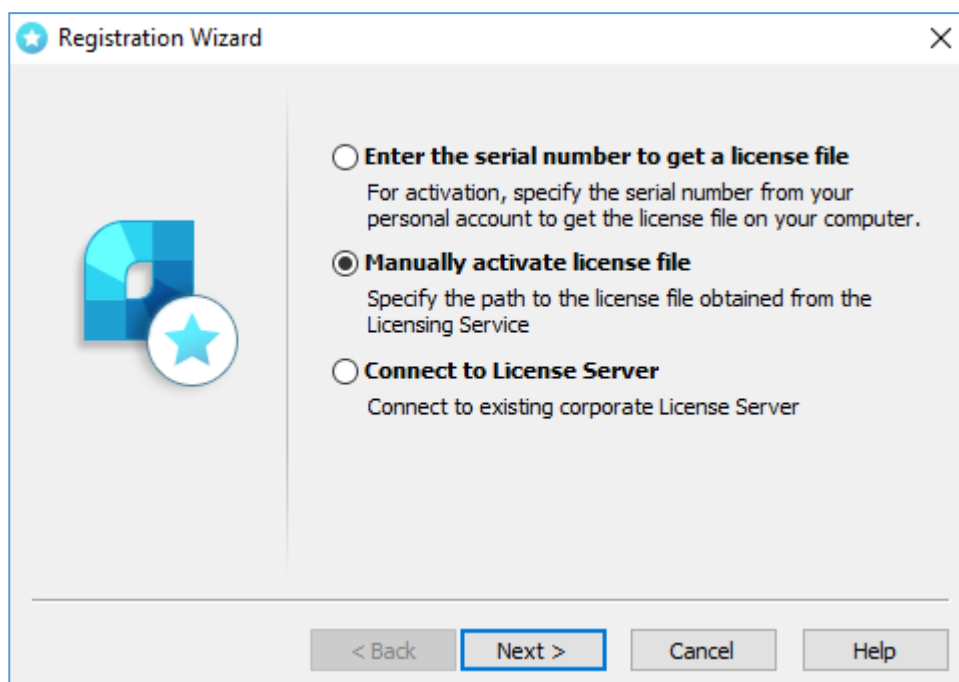


It is possible to save license request in text file. You will be able to transfer this file to another computer and send to Licensing Server or Support Portal through the Internet. Registration Wizard will automatically generate *LicenseRequest.eml* file – this is text file including an important information for getting the license.

Send this file to your support manager, then you will get the license file and further instructions.

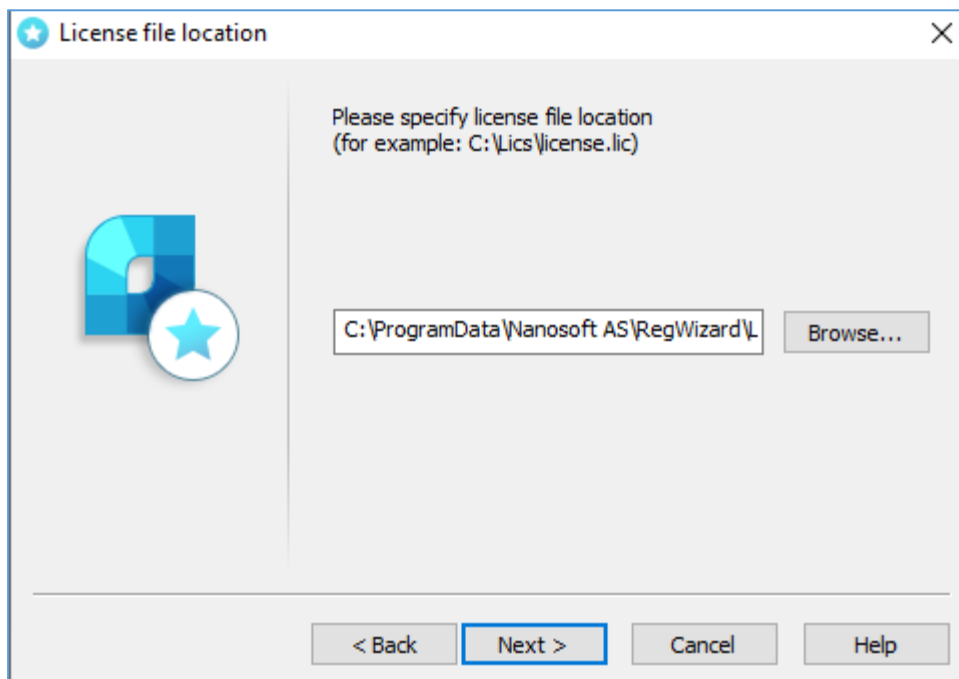
Manually activate license file

If you received the license file, you should activate it. Save this file on computer. Start Registration Wizard, choose *Manually activate license file* option:



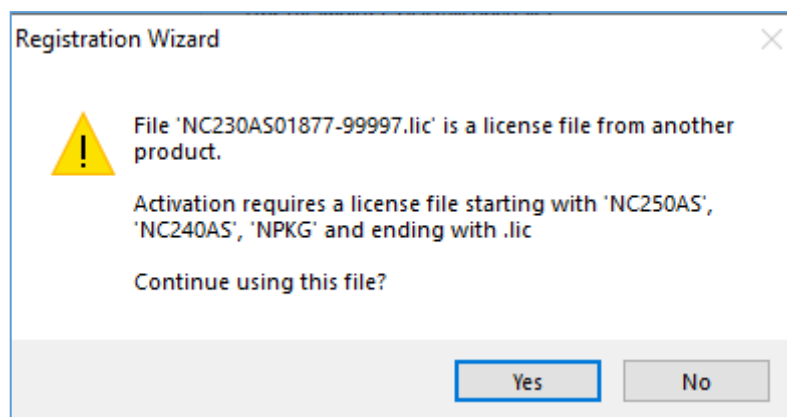
License file location

Click *Browse* to specify the location of the license file.

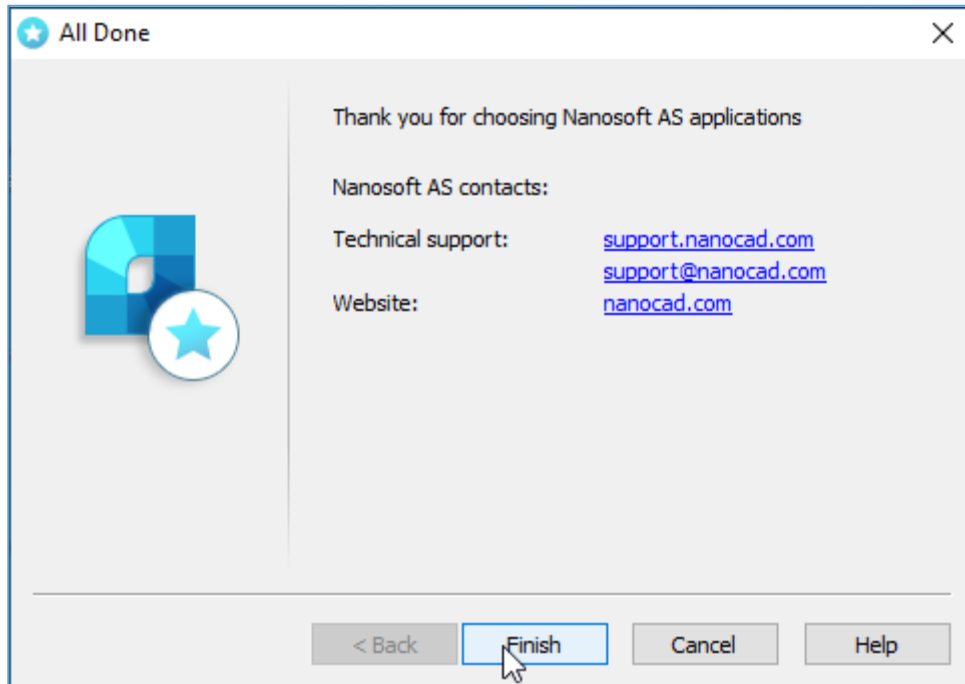


Click *Next*.

If the chosen license does not match current product, you will receive message:



Click *No* and select proper license



Congratulations! License file successfully received. Product is activated.

Network license activation

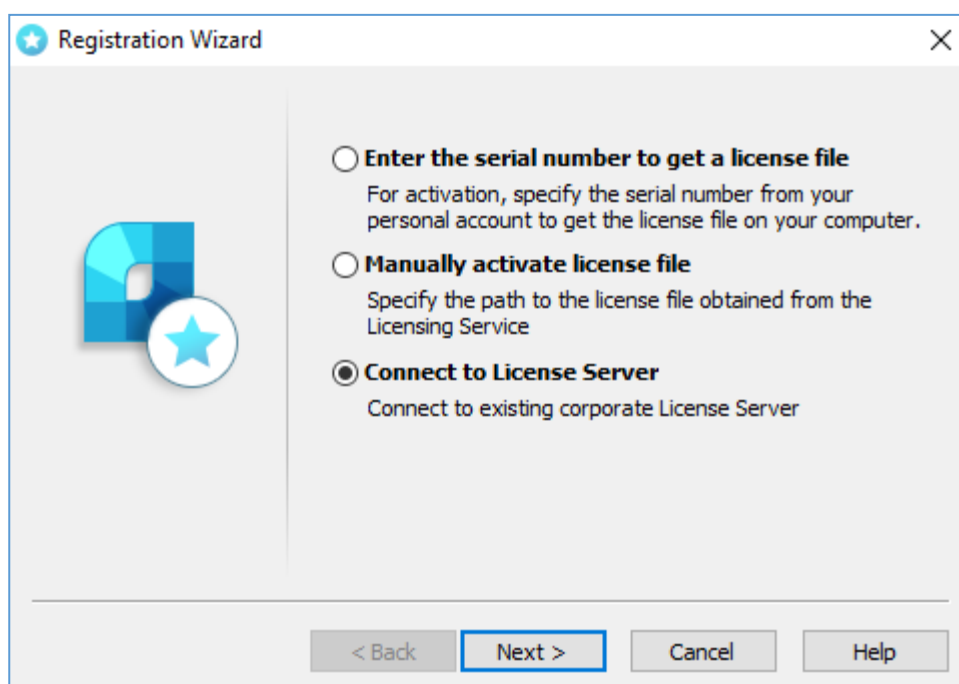
Network licensing requires a TCP/IP connection. Install License Server on one of computers in the local network. Install nanoCAD on every computer which will use it, then connect nanoCAD with License Server through the Registration Wizard by the name of Server PC or its IP address.

Network license provides installing nanoCAD on any number of PCs, but no more than the number of paid PCs will be able to start nanoCAD at the same time.

Connect to License Server

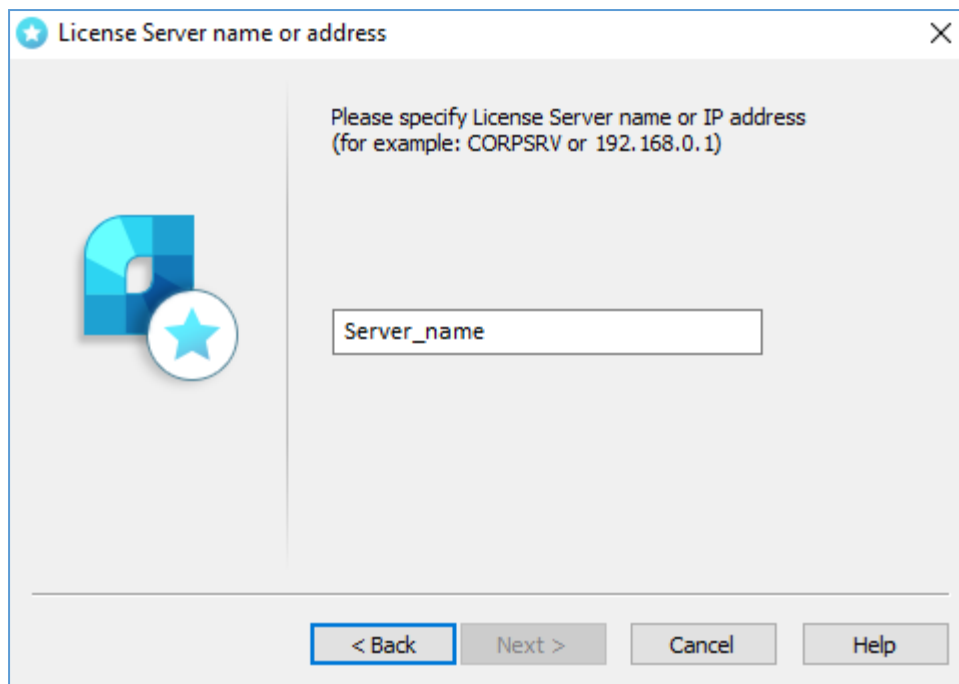
If Nanosoft License Server is installed in the local network, you should connect nanoCAD to it.

Run Registration Wizard, choose *Connect to License Server* option and click *Next*:



Specify License Server

Enter the IP-address of computer where the License Server runs (for example, 192.168.0.1), or a NetBIOS-name of this computer (for example, CORPSRV). If you use irregular ports, enter the name of port and server name: <port>@<server_name> (for example, 270010@CORPSRV):



Click *Next*.

Congratulations! Product is activated.

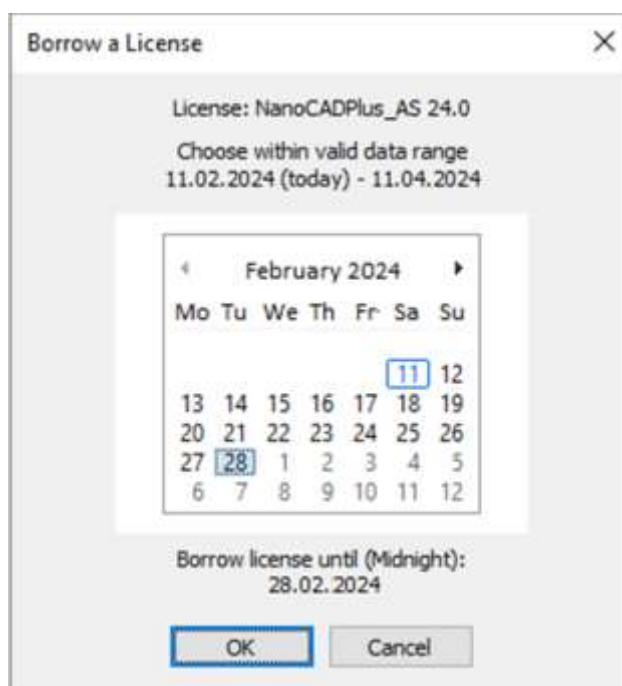
License Borrowing

License borrowing allows to use nanoCAD outside the local network during a certain time. This option doesn't work by default, please connect Support Center support@csoft.com or support@nanocad.in for getting specific license file.

How to Borrow License

To borrow license from the License Sever:

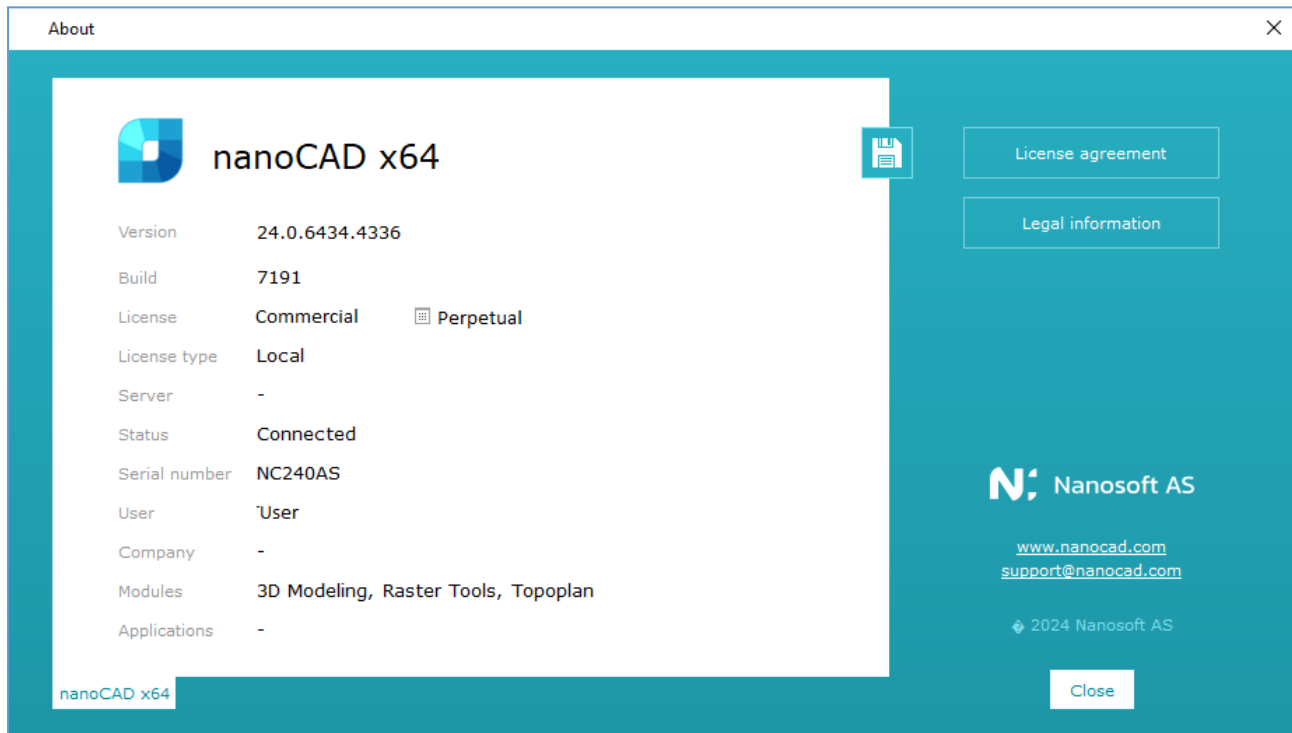
- call the BORROWLICENSE command in the nanoCAD command line;
- Specify end borrowing date and click **OK**.



At the end of the specified date the borrowed license will be returned to the License Server. To turn the license back to server earlier, connect nanoCAD to License Server and call RETURNLICENSE command.

About

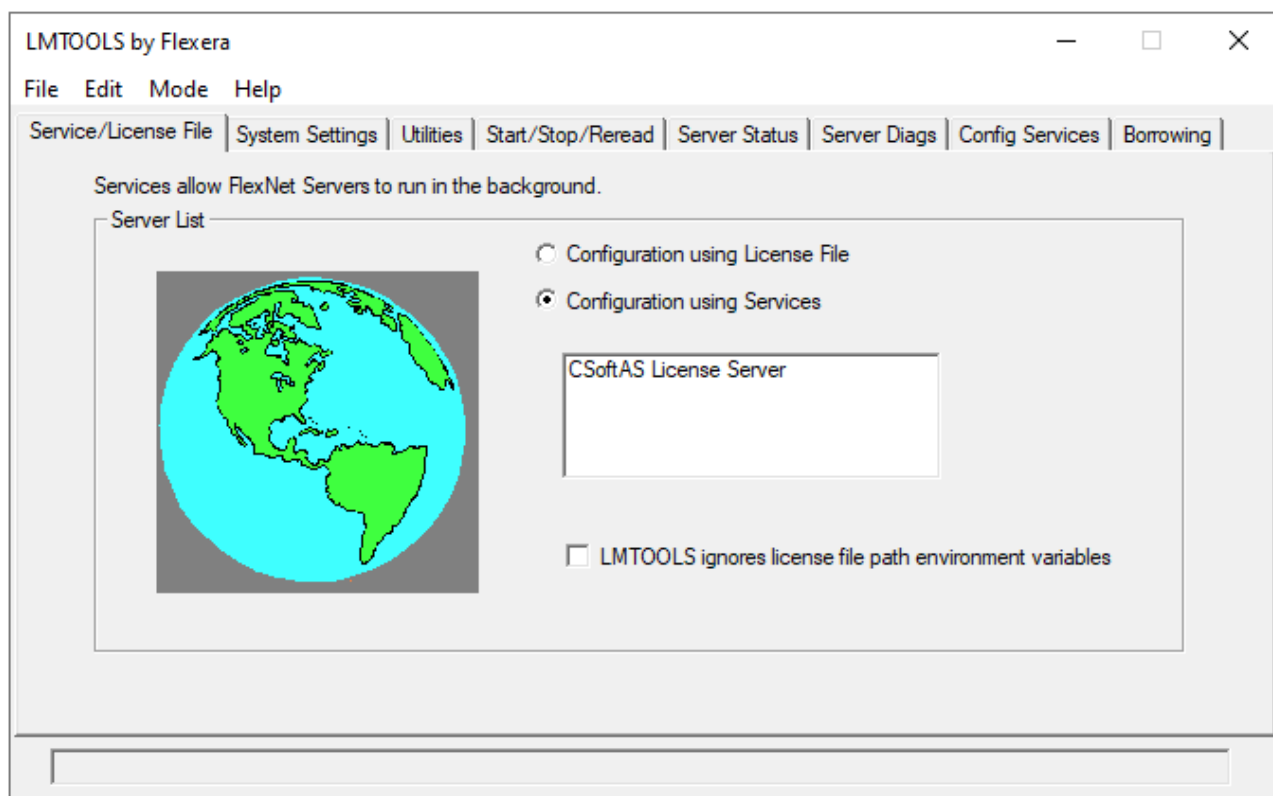
You can find your license information in About window



Network Licensing

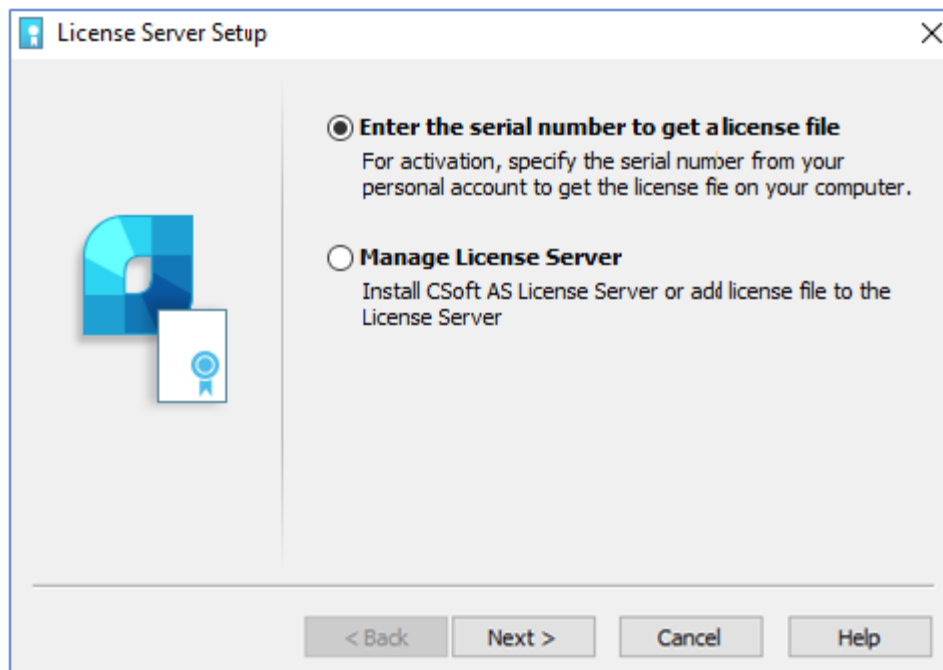
Download *License Server* from the website <https://nanocad.com/products/nanocad-platform/download/>. Network licensing in nanoCAD contains the set of utilities for installation, maintenance and control of network licenses:

- License Server Setup Wizard is an utility for installation and maintenance of network licenses. It installs, deletes, services the server part of the network license;
- Nanosoft AS License Server is a server part of network licensing; it includes the set of programs, utilities, services which control licenses and provide reports. You can find them at: C:\Program Files (x86)\CSoft AS\CSoftAS License Server



Run License Server

Start LicServSetupNanosoftAS.exe file:

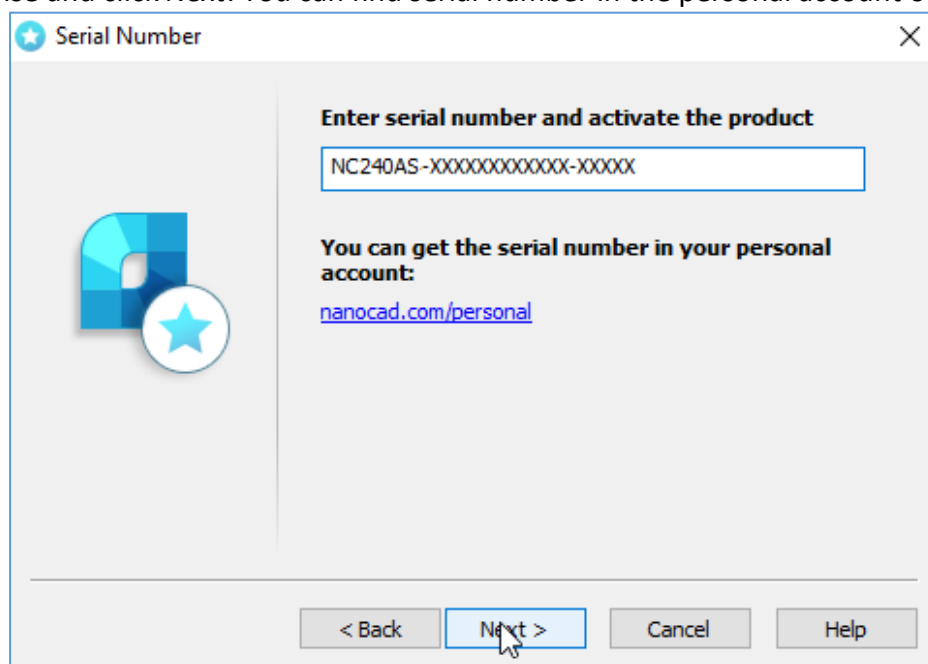


The first option *Request license file* is the main one. Choose it when you start License Server at the first time and need to install it, when you need to activate the license, or get new license file for existing server.

If you already have the license file, or you need to stop or delete License Server, choose the second option *Manage License Server*.

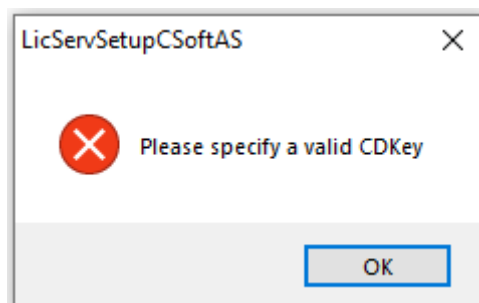
Request Network License

If you didn't get the license file yet, choose Request license file option. Enter serial number of your network license and click *Next*. You can find serial number in the personal account on website.



If you don't have the serial number, click on nanocad.com/personal link, you will be redirected to nanocad.com website into your personal cabinet where you can get your serial number.

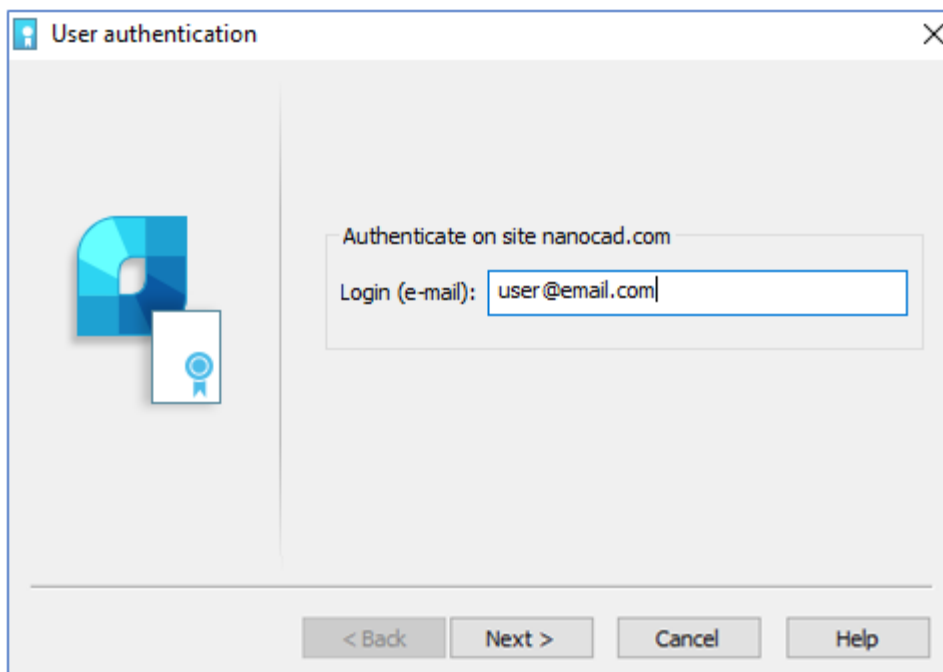
If serial number is invalid, you get message:



In this case click OK and check if you using proper serial number from your personal account.

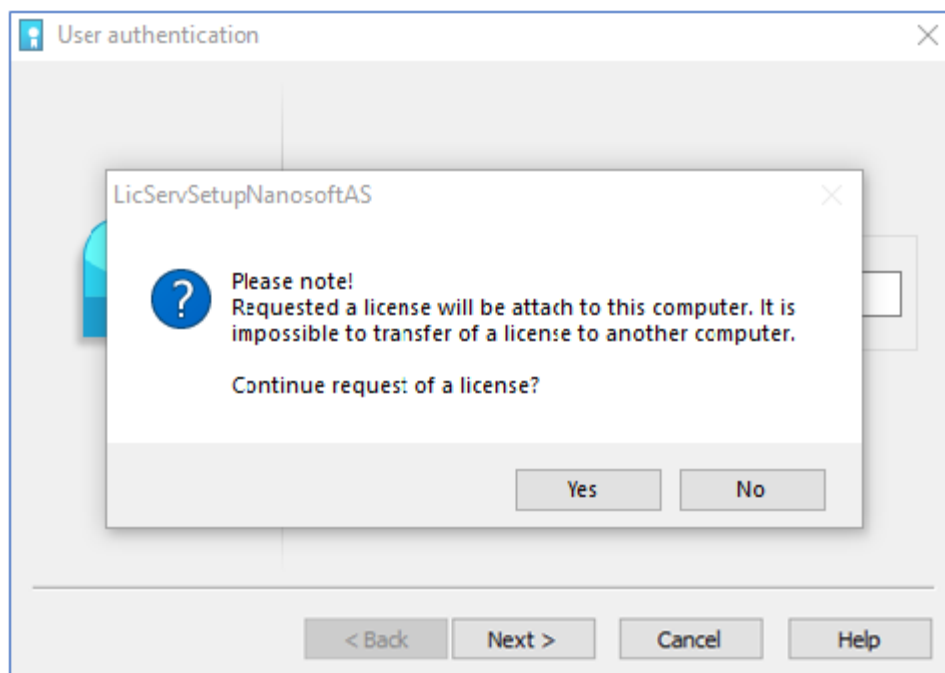
User Authentication

Enter your *Login* (matches your email address).



Confirm Registration Data

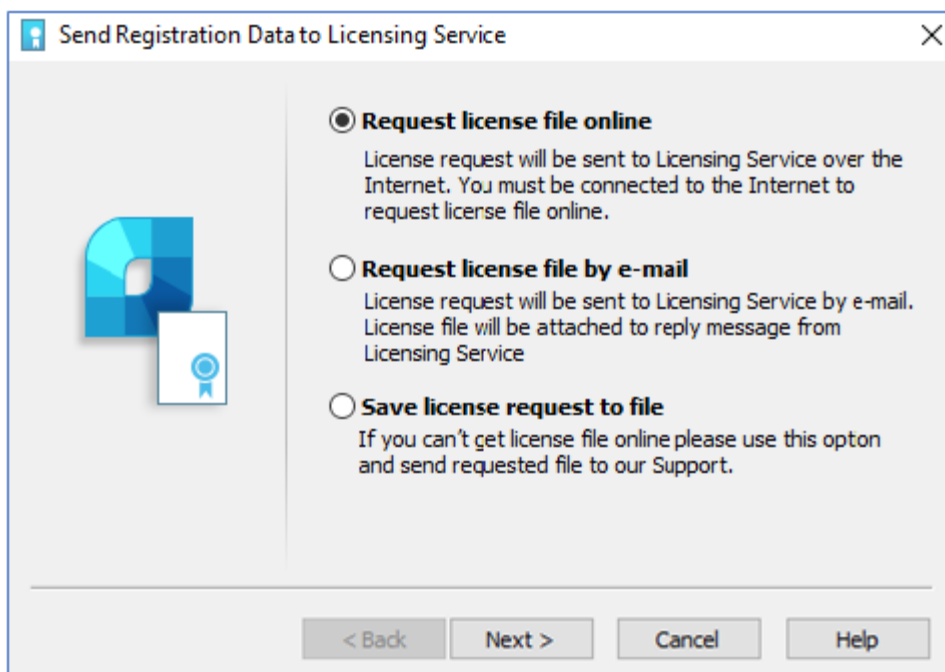
Click **Yes** and then **Next** to request for a license:



Send Registration Data to Licensing Server

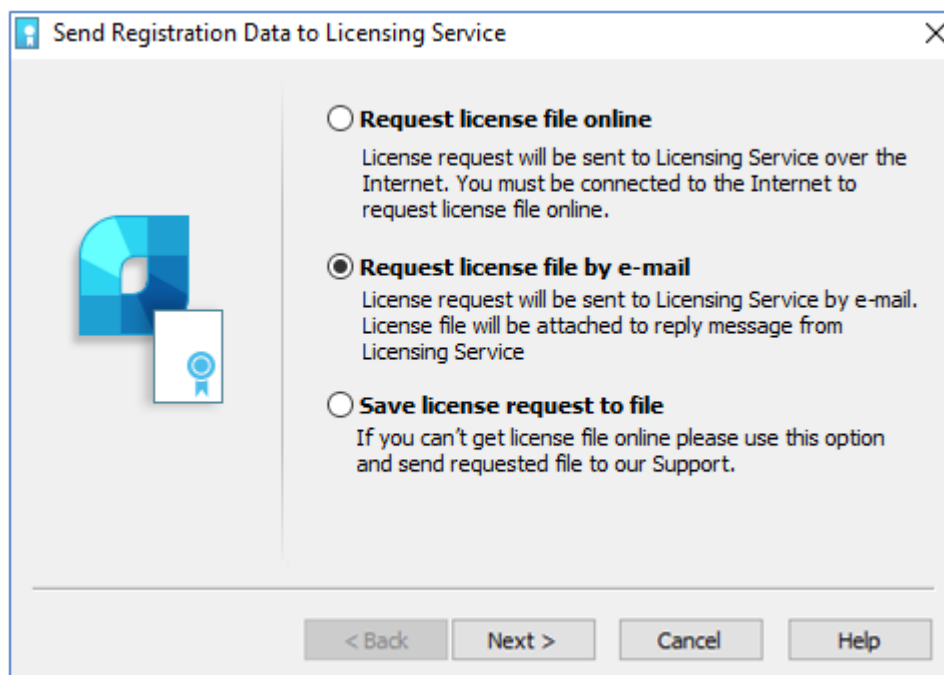
Choose one of the methods to get the license file.

If computer has Internet connection, choose *Request license file online* option and click **Next**.

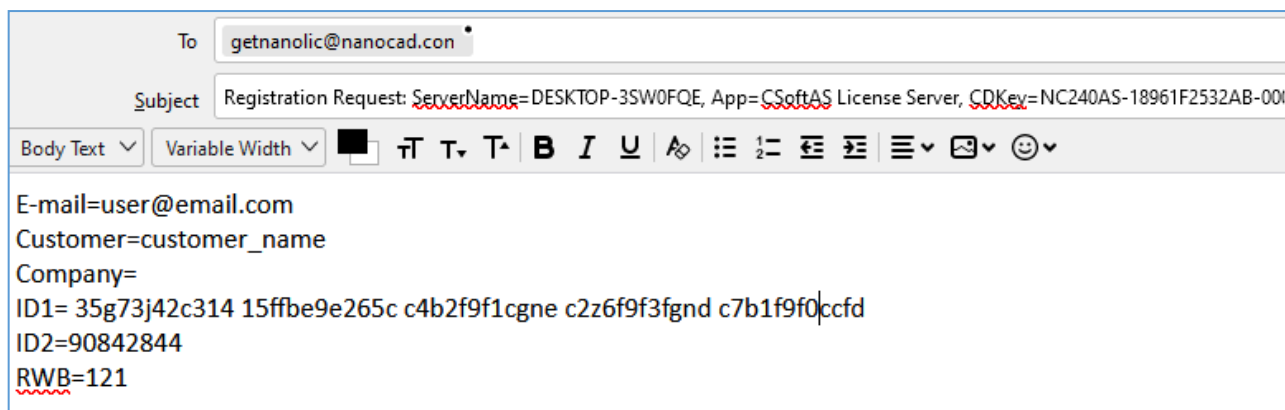


Request license file by email

It is possible to get license file by e-mail. Choose this option in *Send Registration Data to Licensing Server* window of the License Server Setup.



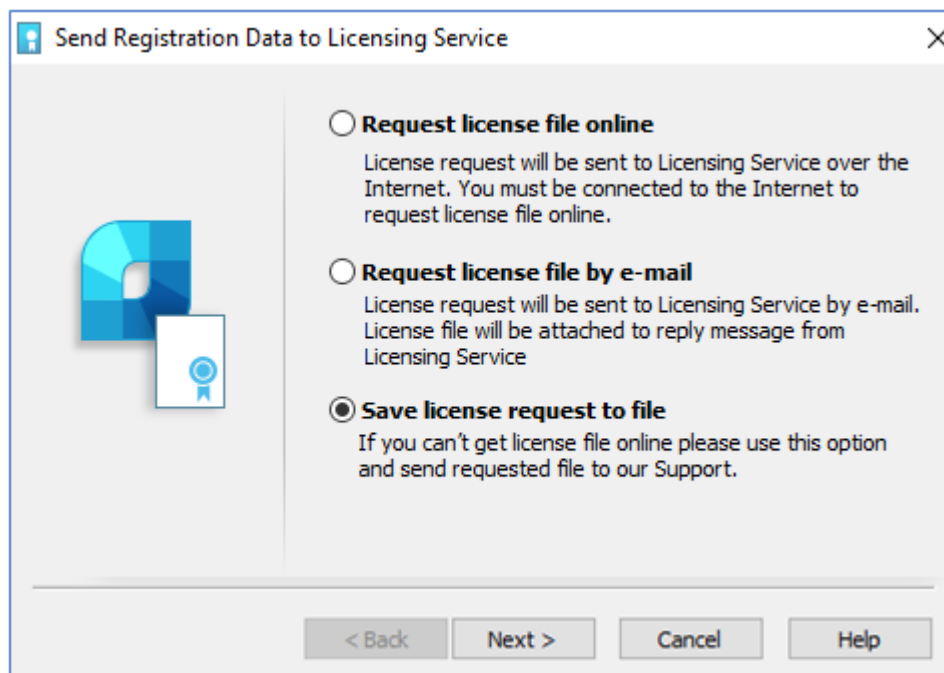
Email will be generated automatically, you should send it. Please do not edit the message just send it as it is.



Save license request to file

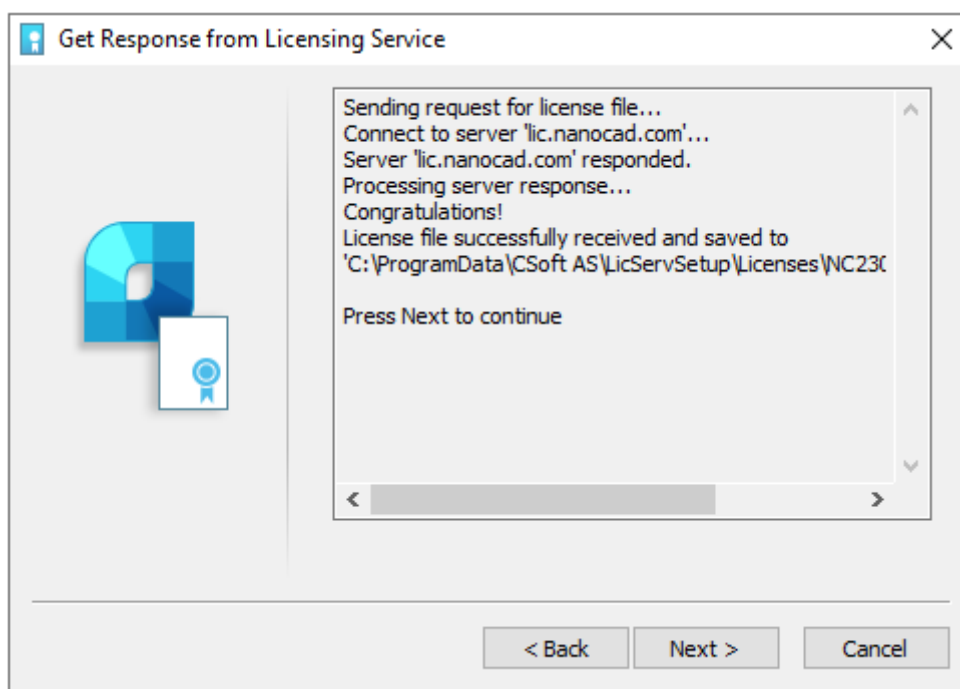
It is possible to save a license request to text file. You will be able to transfer this file to another computer with Internet connection and send to Licensing Server or Support Portal. Program will automatically generate *LicenseRequest.eml* file – it is a text file with important information for getting the license.

Send this file to your support manager, then you will get the license file and further instructions.

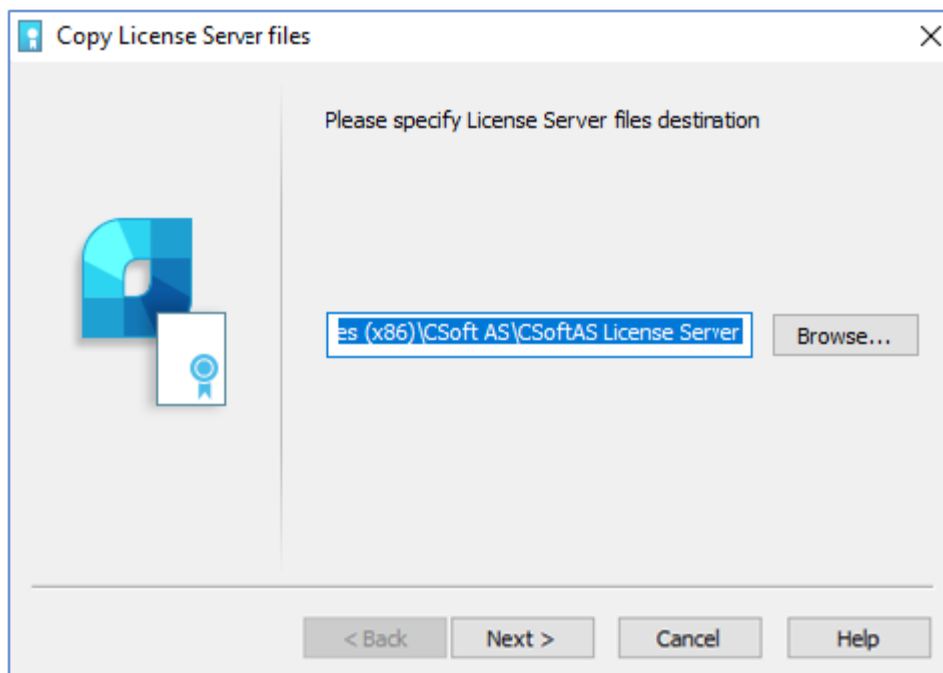


Respond from Licensing Service

If you request the license file online, License Server will receive it, save and activate automatically.

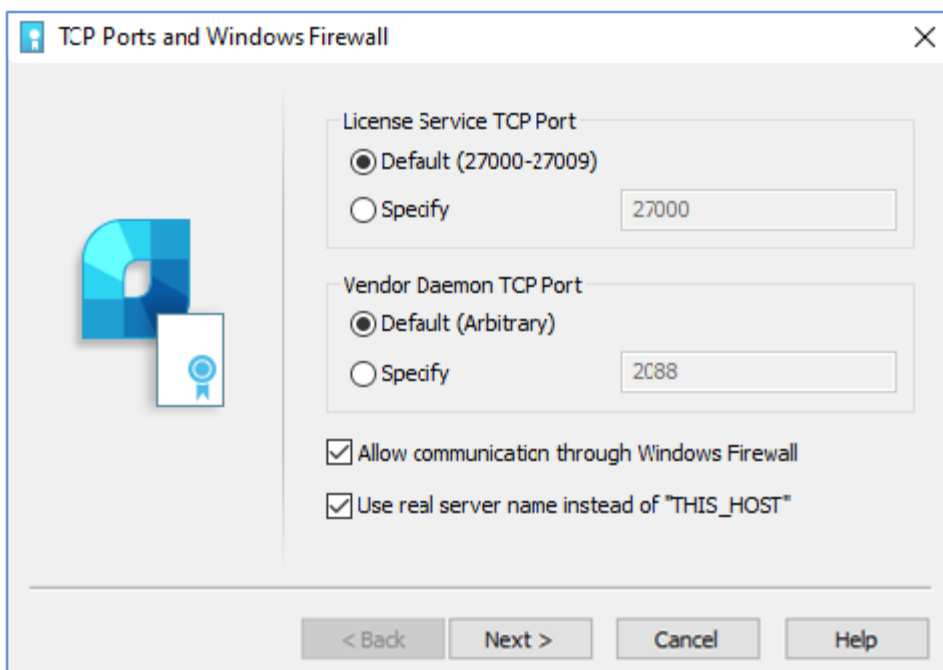


Specify License Server files destination:

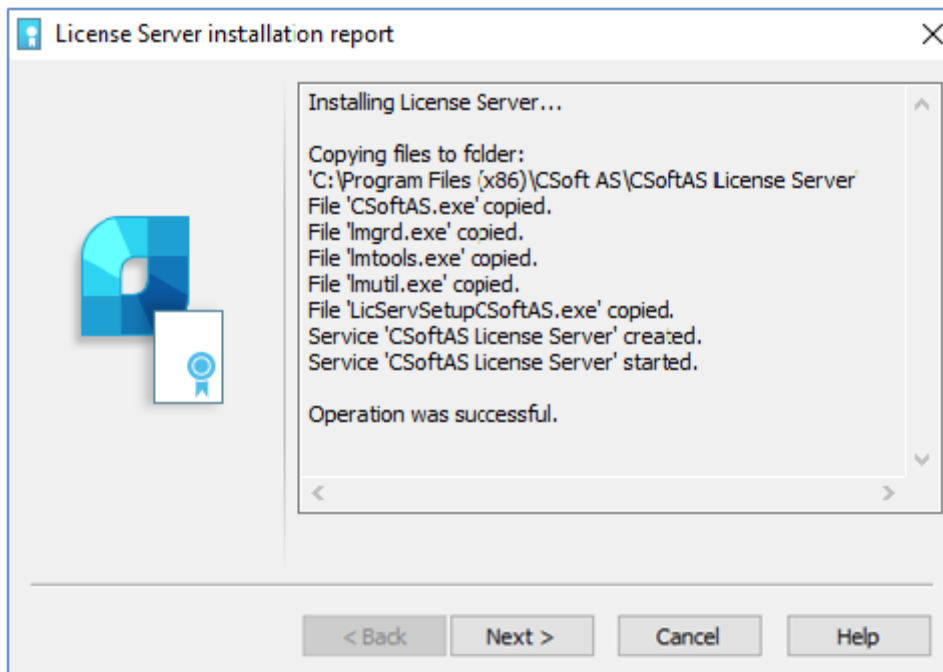


It's recommended not to change default files destination: *C:\Program Files (x86)\CSoft AS\CSoftAS License Server*

Click *Next* then, if needed, specify settings for Ports. Usually, it is better to leave it by default.



Click *Next*

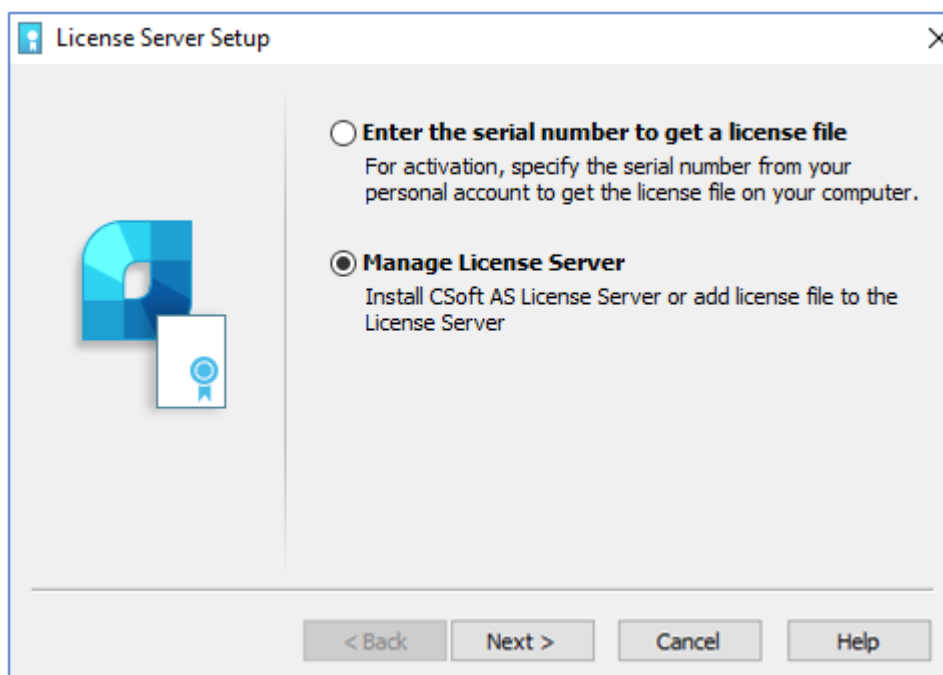


And then *Finish*.

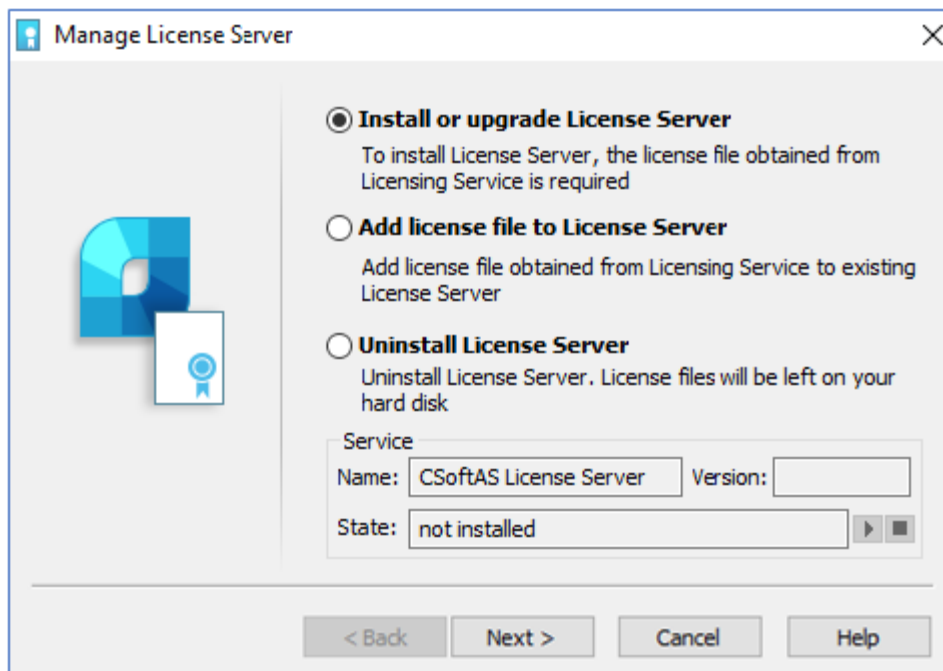
Congratulations! License Server successfully installed.

Configure License Server

If you already have license file, you could install and configure License Server. Run *License Server Setup Wizard*, choose *Manage License Server* option:

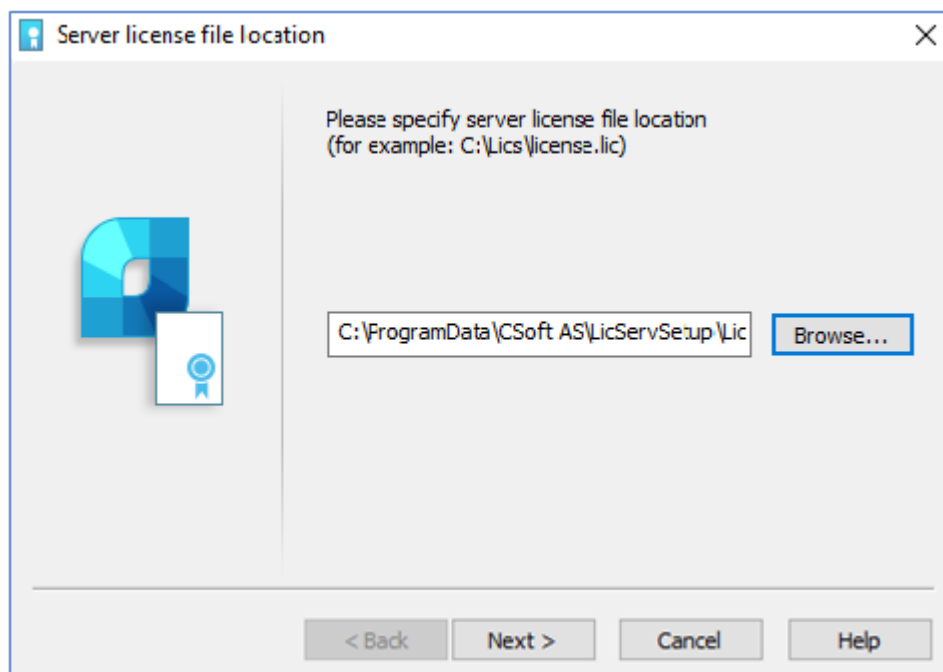


Manage License Server window includes several options:



- Install or upgrade License Server. Use this option if the License Server is not installed yet. Specify the location of the license file, then click *Next*. Network license files are located in *C:\ProgramData\CSoft AS\LicServSetup\Licenses* folder by default:

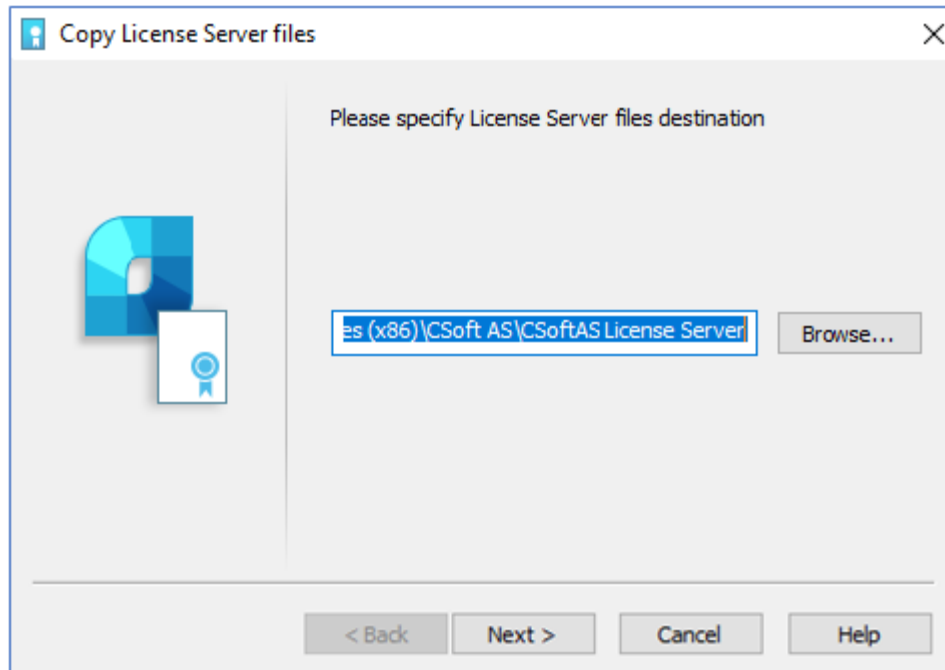
Click *Next*.



Specify path where to copy License Server files.

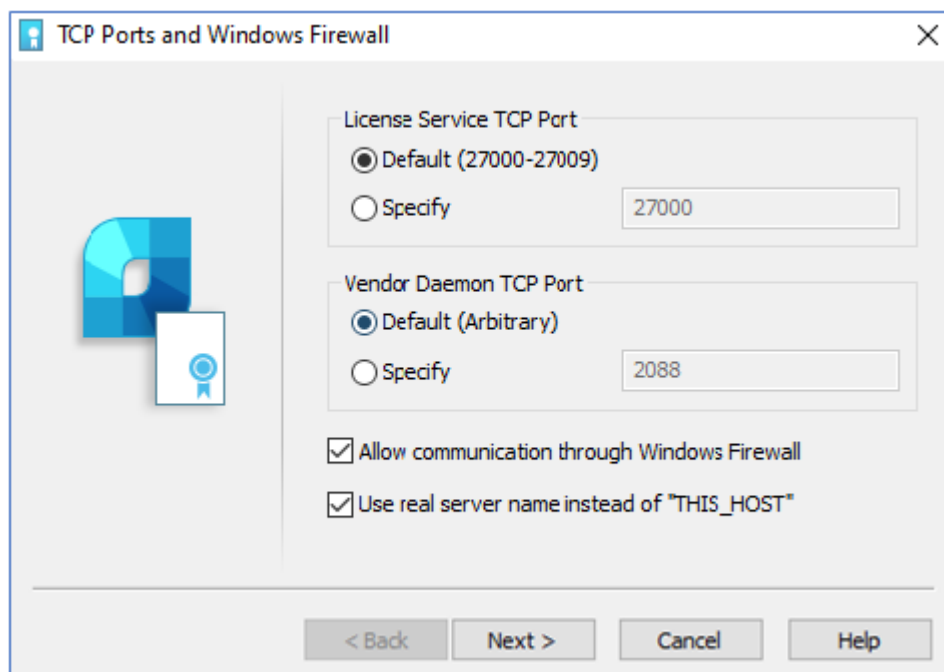
Default path for *License Server* to install is: *C:\Program Files (x86)\CSoft AS\CSoftAS License Server*

Click *Next*:

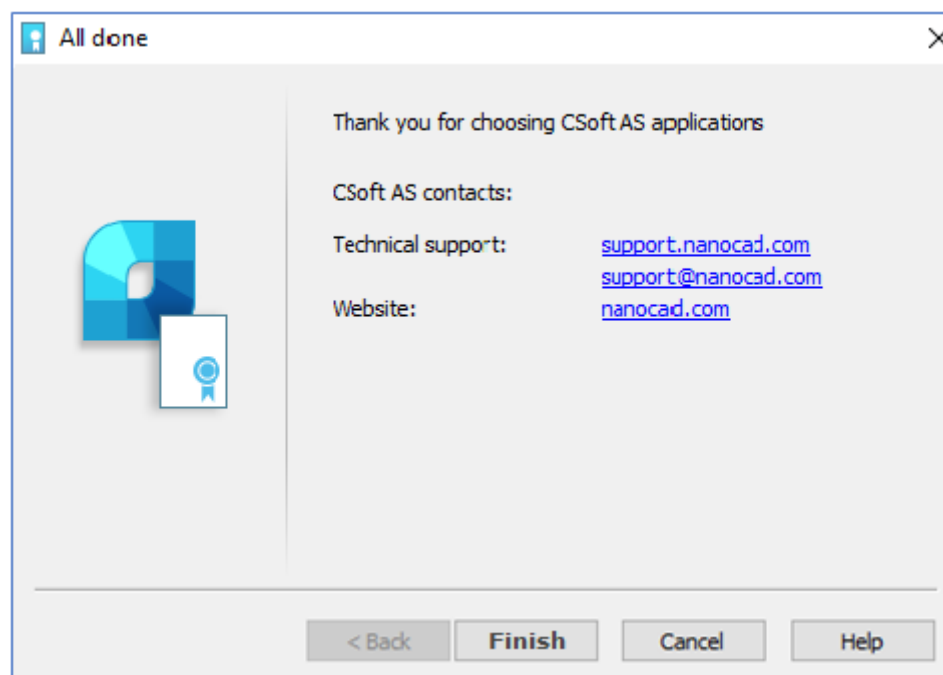
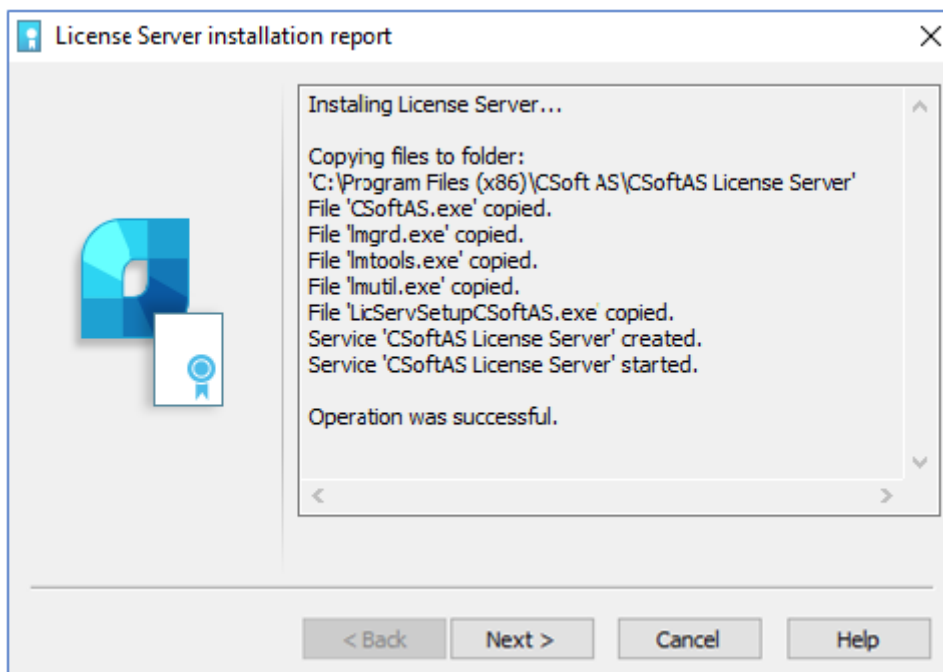


Then specify License Service and Vendor Daemon TCP ports.

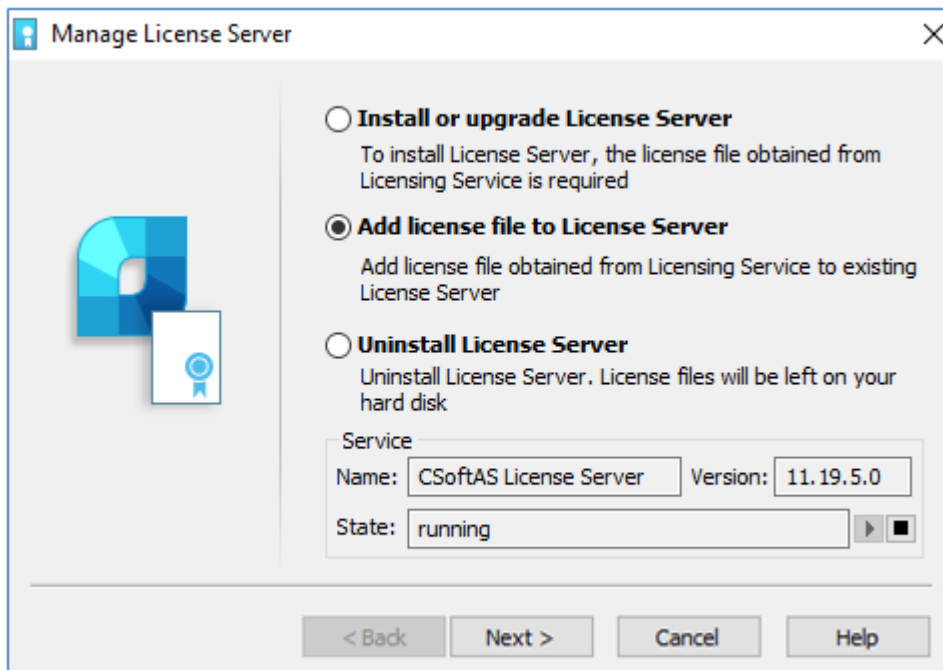
Use default ports or set specific ones



Click *Next* and then *Finish*:



- Add License File to License Server. Use this option when License Server is installed and works and you need to update or upgrade the current license. Specify the license file location and click *Next*. Network license files are usually located in *C:\ProgramData\CSoft AS\LicServSetup\Licenses* folder by default.



The License file will be added to License Server. The Server will be restarted automatically.

Remote connection to License Server

There is a possibility to connect to remote License Server through the Internet. To do this, you need to forward the port of the License Server (standard port 27000), so that it is available for connection from the global network and has a public (permanent) IP address on the computer where the License Server is installed. In this case, you can connect to the License Server from any computer that has Internet access. To connect to the License Server configured for Internet connections, you will need to specify not only the external IP address in the Registration Wizard but also the port, using the @ symbol, for example, `27000@external_ip`.

Possible problems and how to fix them

You can read information about the most common problems below. If you cannot solve the problem, contact our Support Center: support@csoft.com or support@nanocad.in.

Get error when start setup.exe file

1. Make sure the installation file is downloaded completely and correctly.
2. Make sure the computer meets the system requirements for the software.
3. Try to install nanoCAD on another computer.
4. Try to localize the problem and send the message to Support Center.

Installation Wizard does not accept serial number

1. Make sure that you enter the serial number for the software you are installing. For example, NC240AS-xxxxxxxxxxx-xxxxx for nanoCAD 24, it is another product. NanoCAD 24.0 does not work on this license.
2. Make sure that you entered all the symbols correctly. Serial number doesn't include O letter, only 0 digit.
3. Make sure the inserted serial number doesn't include non-printable characters (space, tab, etc.).
4. Contact Support Center. Don't forget to specify the name and version of the software and the serial number you're trying to activate.

Software does not run

1. Make sure the computer meets the system requirements for the software.
2. Make sure that the installed files are not damaged. For example, if the computer is infected with virus, then antivirus software can move nanoCAD's files to the quarantine.
3. Contact Support Center. Try to explain the problem in detail, don't forget to specify the version of nanoCAD.